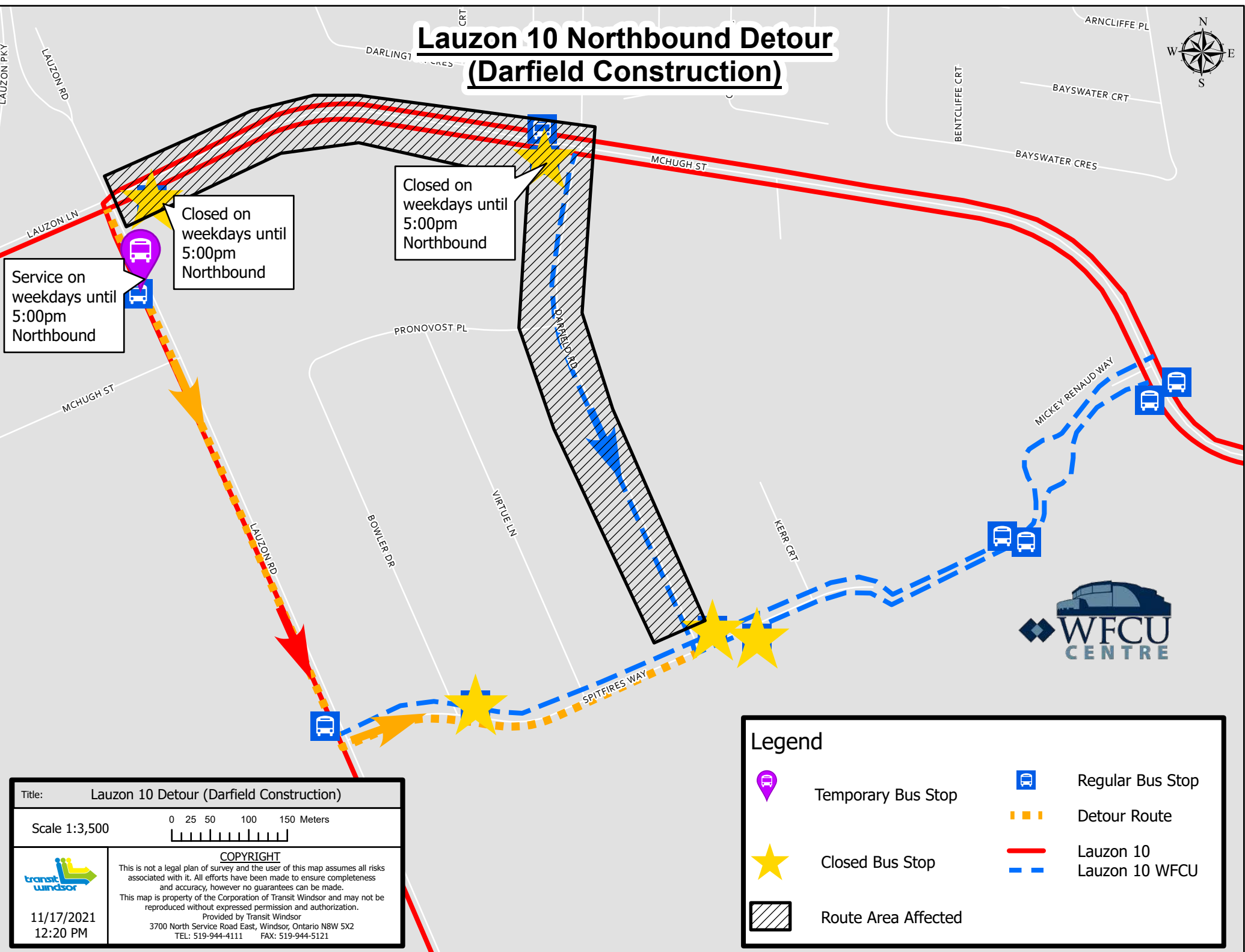


# Lauzon 10 Northbound Detour (Darfield Construction)



Service on weekdays until 5:00pm Northbound

Closed on weekdays until 5:00pm Northbound

Closed on weekdays until 5:00pm Northbound



Title: Lauzon 10 Detour (Darfield Construction)

Scale 1:3,500

0 25 50 100 150 Meters

**COPYRIGHT**  
 This is not a legal plan of survey and the user of this map assumes all risks associated with it. All efforts have been made to ensure completeness and accuracy, however no guarantees can be made.  
 This map is property of the Corporation of Transit Windsor and may not be reproduced without expressed permission and authorization.  
 Provided by Transit Windsor  
 3700 North Service Road East, Windsor, Ontario N8W 5X2  
 TEL: 519-944-4111 FAX: 519-944-5121

11/17/2021  
12:20 PM

### Legend

- Temporary Bus Stop
- Regular Bus Stop
- Closed Bus Stop
- Detour Route
- Lauzon 10
- Lauzon 10 WFCU
- Route Area Affected