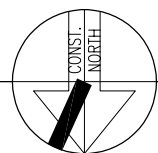


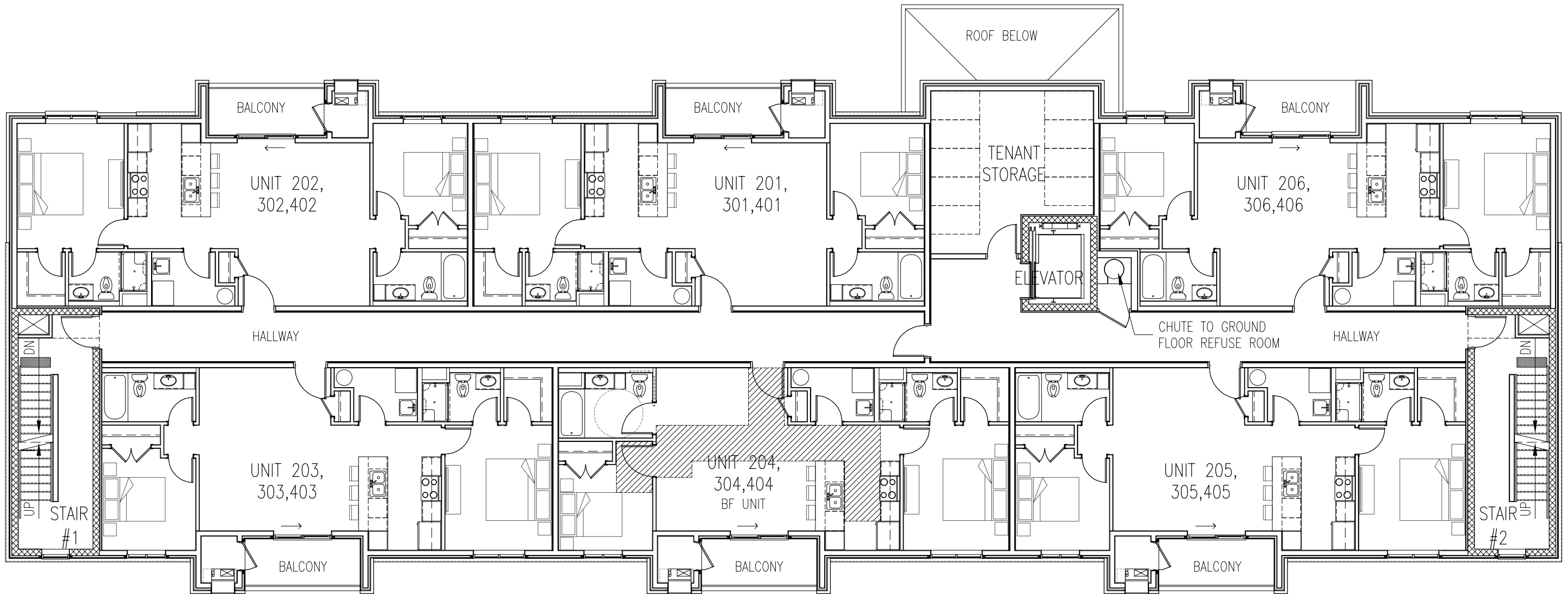
GROUND FLOOR PLAN

SCALE : 3/32" = 1'-0" 0 2 4 8 16 32 FEET



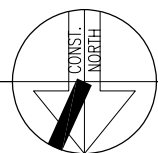
| SUITE COUNT | | |
|--------------|-----------|------------------|
| FLOOR | 2 BED | TOTAL |
| GROUND | 5 | 5 |
| 2ND-4TH | 6/FLR | 18 |
| TOTAL | 23 | 23 SUITES |

| | | | | |
|--|--|---|-------------------------------|----------------------------|
| | <p>1670 mercer street windsor ontario canada n8x 3p7 ph 519.254.3430 fax 519.254.3642 email - info@ada-architect.ca www.ada-architect.ca</p> | <p>project: PROPOSED 4 STOREY MULTI UNIT DWELLING 1919, 1925 & 1949 DEVONSHIRE COURT, WINDSOR, ONT.</p> | <p>title: FLOOR PLAN</p> | <p>date: NOV. 2020</p> |
| | | <p>client: SPINITI</p> | <p>drawn by: TC</p> | <p>comm. no.: 2021-007</p> |
| | | <p>checked by: SMB / JBK / TC</p> | <p>dwg. no.: A1.1a</p> | |



SECOND-FOURTH FLOOR PLANS

SCALE : 3/32" = 1'-0" 0 2 4 8 16 32 FEET



| SUITE COUNT | | |
|--------------|-----------|------------------|
| FLOOR | 2 BED | TOTAL |
| GROUND | 5 | 5 |
| 2ND-4TH | 6/FLR | 18 |
| TOTAL | 23 | 23 SUITES |

| | | | | |
|--|---|--|------------------------|---------------------|
| | 1670 mercer street windsor ontario canada n8x 3p7 ph 519.254.3430 fax 519.254.3642 email - info@ada-architect.ca www.ada-architect.ca | project: PROPOSED 4 STOREY MULTI UNIT DWELLING 1919, 1925 & 1949 DEVONSHIRE COURT, WINDSOR, ONT. | title: FLOOR PLAN | date: NOV. 2020 |
| | | client: SPINITI | drawn by: TC | comm. no.: 2021-007 |
| | | checked by: SMB / JBK / TC | dwg. no.: A1.2a | |