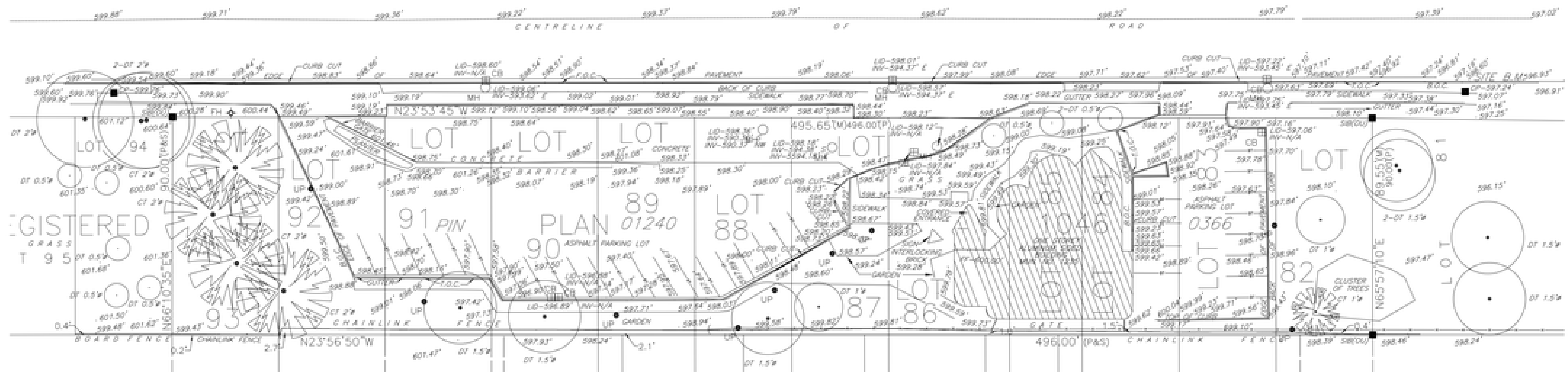


HURON

CHURCH

LINE



**NOTES:**

PROPOSED ZONING FOR SITE	COMMERCIAL DISTRICT 4.1 (CDA-1)
TOTAL SITE AREA	RECREATION DISTRICT
TOTAL PROPOSED SITE COVERAGE	14,121 SQ. FT. (1,127.5 SQ. W.)
GROUND FLOOR AREA	15,828 SQ. FT. (1,286.4 SQ. W.)
TYPICAL FLOOR AREAS (Chd & 3rd)	4,205 SQ. FT. (330.7 SQ. W.)
CHURCH FLOOR AREA	16,996 SQ. FT. (1,342.8 SQ. W.)
TOTAL FLOOR AREA OF NEW RESIDENTIAL	12,915 SQ. FT. (1,026.8 SQ. W.)
TOTAL FLOOR AREA OF NEW COMMERCIAL	3,244 SQ. FT. (253.7 SQ. W.)
WORKSHOP REPAIR GARAGE	2,915 SQ. FT. (231.8 SQ. W.)
TOTAL FLOOR AREA OF NEW COMMERCIAL	2,915 SQ. FT. (231.8 SQ. W.)
GROSS PROPOSED FLOOR AREA	33,894 SQ. FT. (2,661.2 SQ. W.)
TOTAL PROPOSED RESIDENTIAL PARKING SPACES	37 SPACES - 1 PER APARTMENT UNIT
TOTAL COMMERCIAL PARKING SPACES REQUIRED	14 SPACES
TOTAL COMMERCIAL PARKING SPACES PROVIDED	14 SPACES
TOTAL PROPOSED ACCESSIBLE SPACES	2 (191' X) PARKING SPACES
TOTAL PROPOSED LANDSCAPING SPACES	7
TOTAL LANDSCAPED AREA	12,745 SQ. FT. (1,027.0 SQ. W.) FOR SORE CONTOUR

HURON CHURCH LINE

