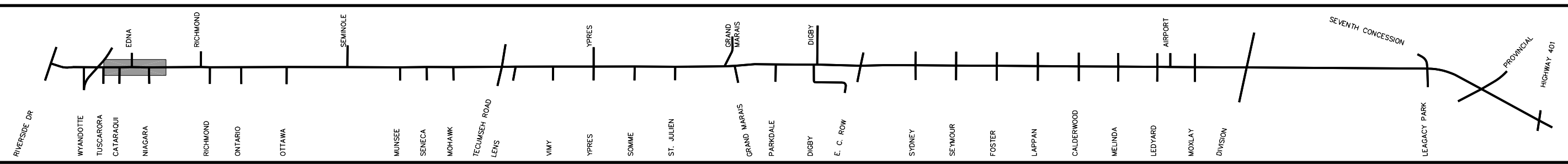
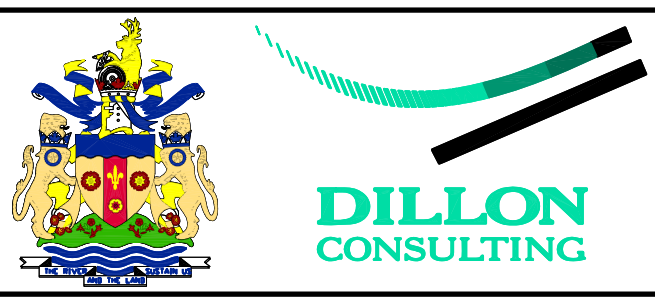
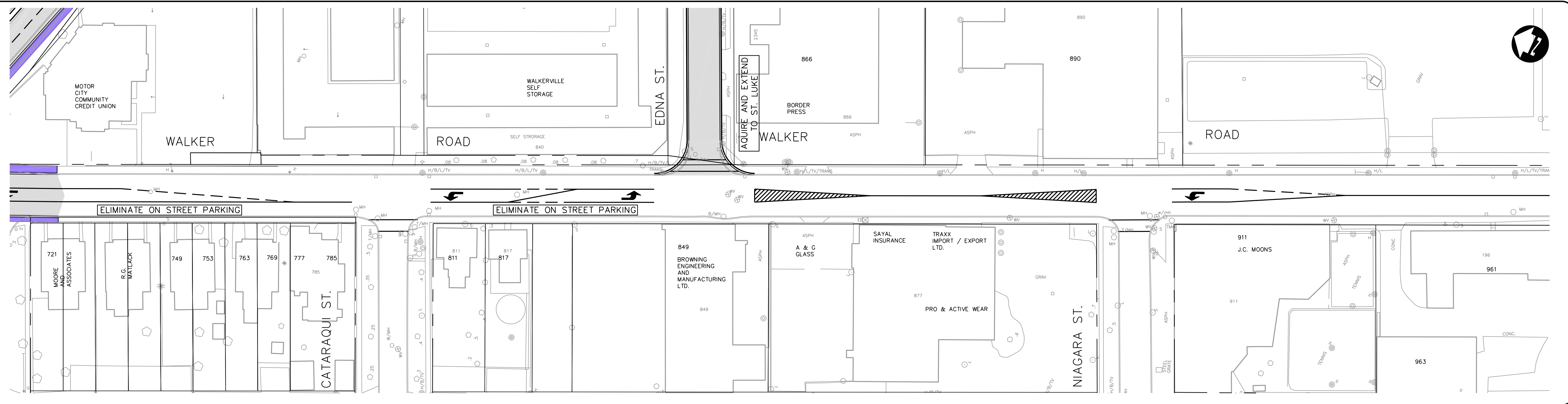


VIEW: SH4  
G:\CAD\996401\6401rdrn.dwg 26/07/01 12:29:57 PM EDT



- NEW SIDEWALKS
- NEW PAVEMENT
- EASEMENT
- PROPERTY ACQUISITION
- CONCEPTUAL DRIVEWAY LOCATION

**LEGEND**

- ROAD CLOSURE (DETAILS TO BE DETERMINED)
- EXISTING TRAFFIC SIGNAL
- NEW TRAFFIC SIGNAL

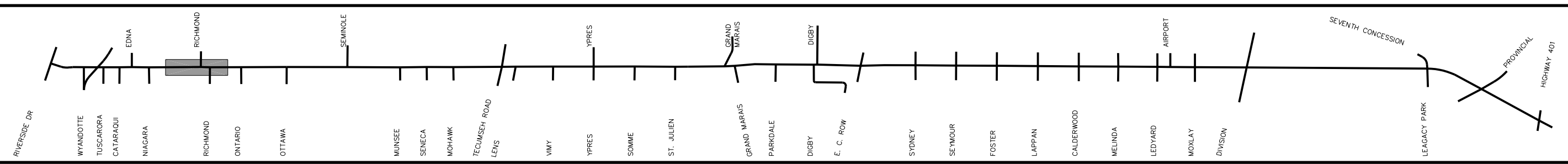
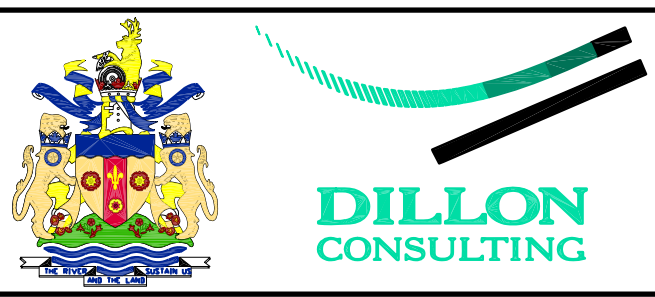
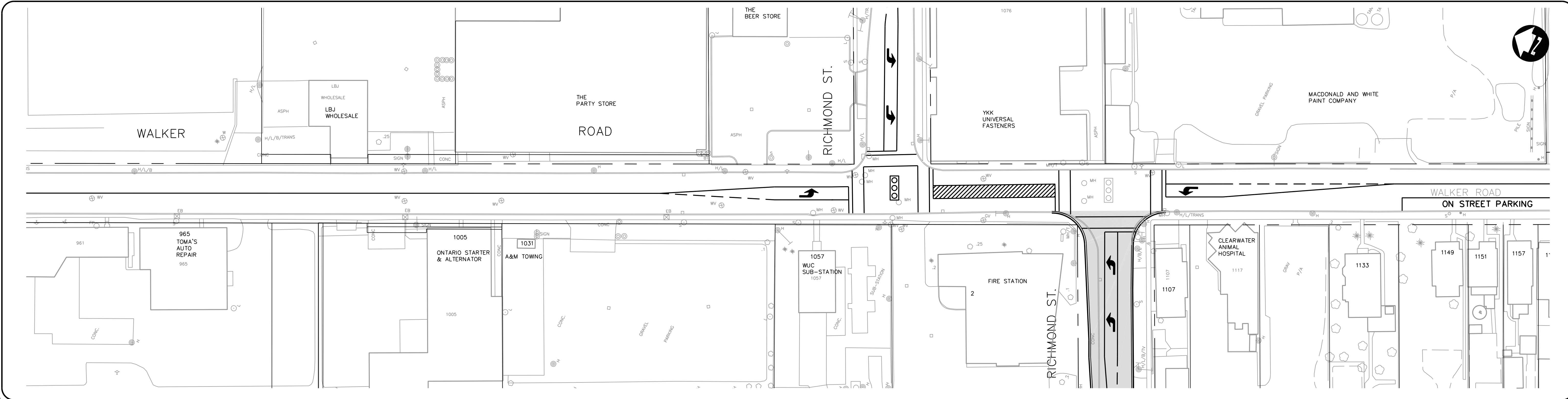
SCALE: 1500

MARCH, 2001

FIGURE 4

**WALKER ROAD CORRIDOR  
GRAND MARAIS ROAD EAST IMPROVEMENTS  
ENVIRONMENTAL STUDY REPORT  
PREFERRED DESIGN**

VIEW: SH15  
 G:\CAD\996401\6401rdrn.dwg 26/07/01 12:29:57 PM EDT



- NEW SIDEWALKS
- NEW PAVEMENT
- EASEMENT
- PROPERTY ACQUISITION
- CONCEPTUAL DRIVEWAY LOCATION

**LEGEND**

- ROAD CLOSURE  
(DETAILS TO BE DETERMINED)
- EXISTING TRAFFIC SIGNAL
- NEW TRAFFIC SIGNAL

SCALE: 1500

MARCH, 2001

FIGURE 5

**WALKER ROAD CORRIDOR  
 GRAND MARAIS ROAD EAST IMPROVEMENTS  
 ENVIRONMENTAL STUDY REPORT  
 PREFERRED DESIGN**

