

PLAN
SCALE 1:250

GENERAL NOTES:

- CLASS OF CONCRETE:**
ALL 30 MPa.
PRECAST CONCRETE GIRDERS 40 MPa.
UNLESS OTHERWISE SPECIFIED.
- CLEAR COVER TO REINFORCING STEEL:**
DECK : TOP 70±20
 BOTTOM 40±10
FOOTING : 100±25
REMAINDER : 70±20
UNLESS OTHERWISE SPECIFIED.
- REINFORCING STEEL:**
- REINFORCING STEEL SHALL BE GRADE 400W UNLESS OTHERWISE SPECIFIED.
- STAINLESS REINFORCING STEEL SHALL BE TYPE 316LN, OR DUPLEX 2205 AND HAVE A MINIMUM YIELD STRENGTH OF 500 MPa. UNLESS OTHERWISE SPECIFIED. BAR MARKS WITH PREFIX 'S' DENOTE STAINLESS STEEL BARS.
- TENSION LAP LENGTHS NOT INDICATED ON THE CONTRACT DRAWINGS SHALL BE CLASS B.
- GLASS FIBER REINFORCED POLYMER REINFORCING BARS SHALL BE GRADE III AS SPECIFIED IN THE CONTRACT DRAWINGS. THE NOMINAL DIAMETER, TENSILE MODULUS OF ELASTICITY AND GUARANTEED MINIMUM TENSILE STRENGTH SHALL BE AS SPECIFIED IN THE CONTRACT DOCUMENTS.
• BAR MARKS WITH A PREFIX 'GIII' DENOTES GRADE III GLASS FIBRE REINFORCED POLYMER BARS.
- BAR HOOKS SHALL HAVE STANDARD HOOK DIMENSIONS USING MINIMUM BEND DIAMETERS, WHILE STIRRUPS AND TIES SHALL HAVE MINIMUM HOOK DIMENSIONS. ALL HOOKS SHALL BE IN ACCORDANCE WITH THE STRUCTURAL STANDARD DRAWING SS12-1 UNLESS INDICATED OTHERWISE.
4. ROADWAY PROTECTION SYSTEMS SHALL BE DESIGNED FOR PERFORMANCE LEVEL 2.

CONSTRUCTION NOTES:

- NO BACKFILL SHALL BE PLACED UNTIL CONCRETE IN THE DECK HAS REACHED A STRENGTH OF 25 MPa.
- BACKFILL SHALL BE PLACED SIMULTANEOUSLY BEHIND BOTH ABUTMENTS, KEEPING THE HEIGHT OF THE BACKFILL APPROXIMATELY THE SAME. AT NO TIME SHALL THE DIFFERENCE IN ELEVATION BE GREATER THAN 500mm.

LIST OF DRAWINGS:

- S1. PRELIMINARY GENERAL ARRANGEMENT DRAWING 1
- S2. PRELIMINARY GENERAL ARRANGEMENT DRAWING 2

APPLICABLE STANDARD DRAWINGS:

- OPSD 911.130 - GUIDE RAIL SYSTEM, CONCRETE BARRIER CAST-IN-PLACE, TYPE A INSTALLATION
- OPSD 3101.150 - WALLS ABUTMENT, BACKFILL MINIMUM GRANULAR REQUIREMENT
- OPSD 3102.100 - WALLS ABUTMENT BACKFILL DRAIN
- OPSD 3290.100 - PIERS - CUTWATER ASSEMBLY
- OPSD 3390.100 - DECK DRIP CHANNEL
- OPSD 3419.100 - BARRIERS AND RAILINGS STEEL BEAM GUIDE RAIL AND CHANNEL ANCHORAGE
- MTOD 3941.210 - FIGURES IN CONCRETE SITE NUMBER AND DATE LAYOUT

AutoCAD drawing: P:\2020\Projects\IM20104013 - Ojibway Wildlife Passage\06_DES-ENG\01_CAD\02_DWG\03_STRUC\03_STRUC\M20104013.dwg
 Apr 15/21 8:42am jorman.wen

APPROVALS				Design	N.K.	Checked	N.K.
Municipal		Regional		Drawn	P.K.	Checked	M.G.
Engineer	Engineer	Scale				AS SHOWN	
Date	Date	Date				APRIL 2021	
No.	DATE	BY	REVISIONS	MAN	CAD		

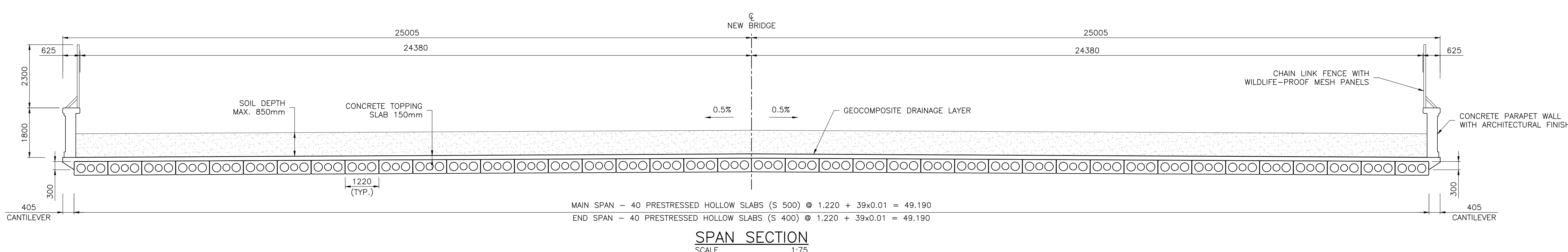
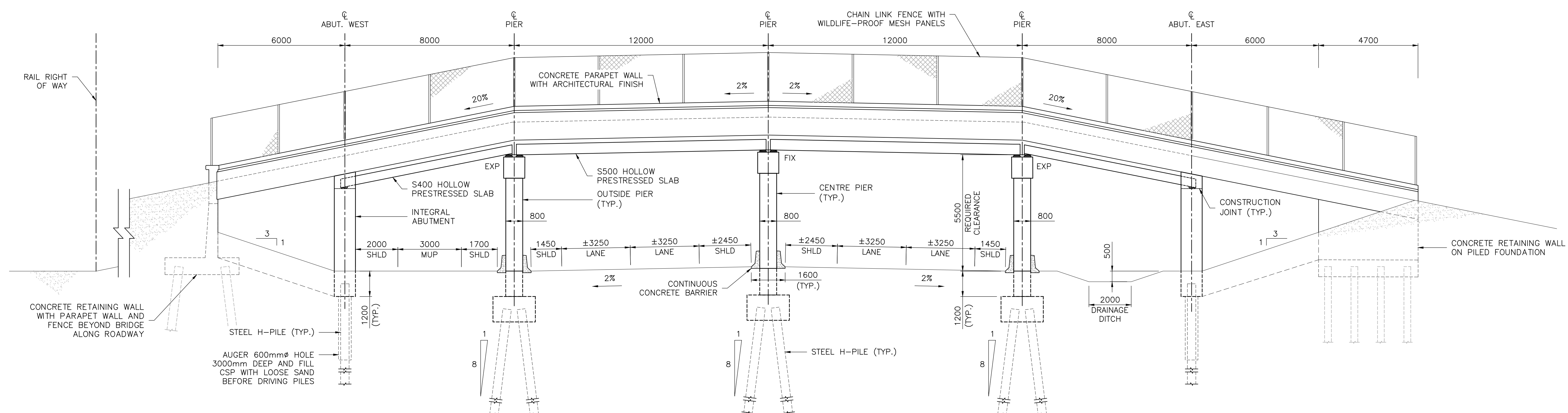
CITY OF WINDSOR
OJIBWAY PARKWAY WILDLIFE
CROSSING STRUCTURE

PRELIMINARY GENERAL
ARRANGEMENT DRAWING 1

FOR
INFORMATION
ONLY

Contract No.	XX - XX
Consultant File No.	IM20104013
Drawing No.	SHEET S1 OF S2

AutoCAD drawing: P:\2020\Projects\IM20104013 - Ojibway Wildlife Passage\06_DES-ENG\01_CAD\02_DWGS\03_STRUCT\W20104013.dwg
 Apr 15/21 9:08am jordan.wen



No.	DATE	BY	REVISIONS	MAN	CAD

APPROVALS	
Municipal	Regional
Engineer	Engineer
Date	Date

Design	N.K.	Checked	N.K.
Drawn	P.K.	Checked	M.G.
Scale	AS SHOWN		
Date	APRIL 2021		

CITY OF WINDSOR
OJIBWAY PARKWAY WILDLIFE
CROSSING STRUCTURE

PRELIMINARY GENERAL
ARRANGEMENT DRAWING 2

FOR
INFORMATION
ONLY

Contract No.	XX - XX
Consultant File No.	IM20104013
Drawing No.	SHEET S2 OF S2