



# Tecumseh Road West Environmental Assessment

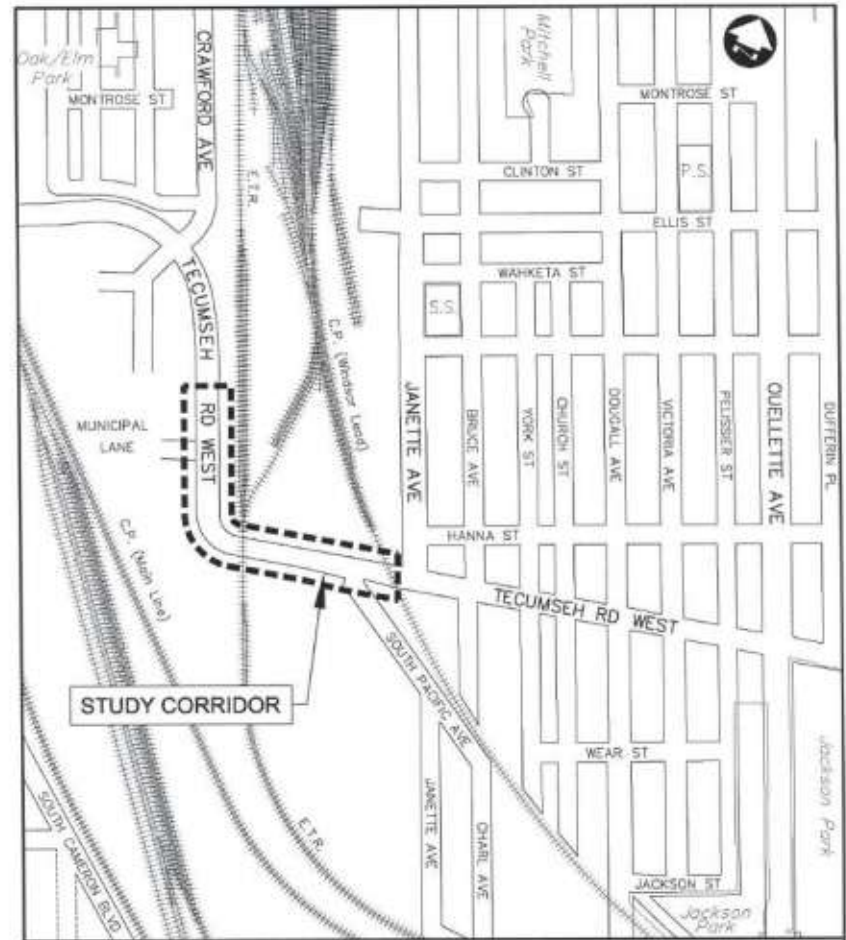
Community Café

September 7, 2017

# Project Introduction

# Introduction

- ▶ This Environmental Assessment was initiated to:
  - Address the transportation needs of Tecumseh Road West from Crawford Avenue to Janette Avenue

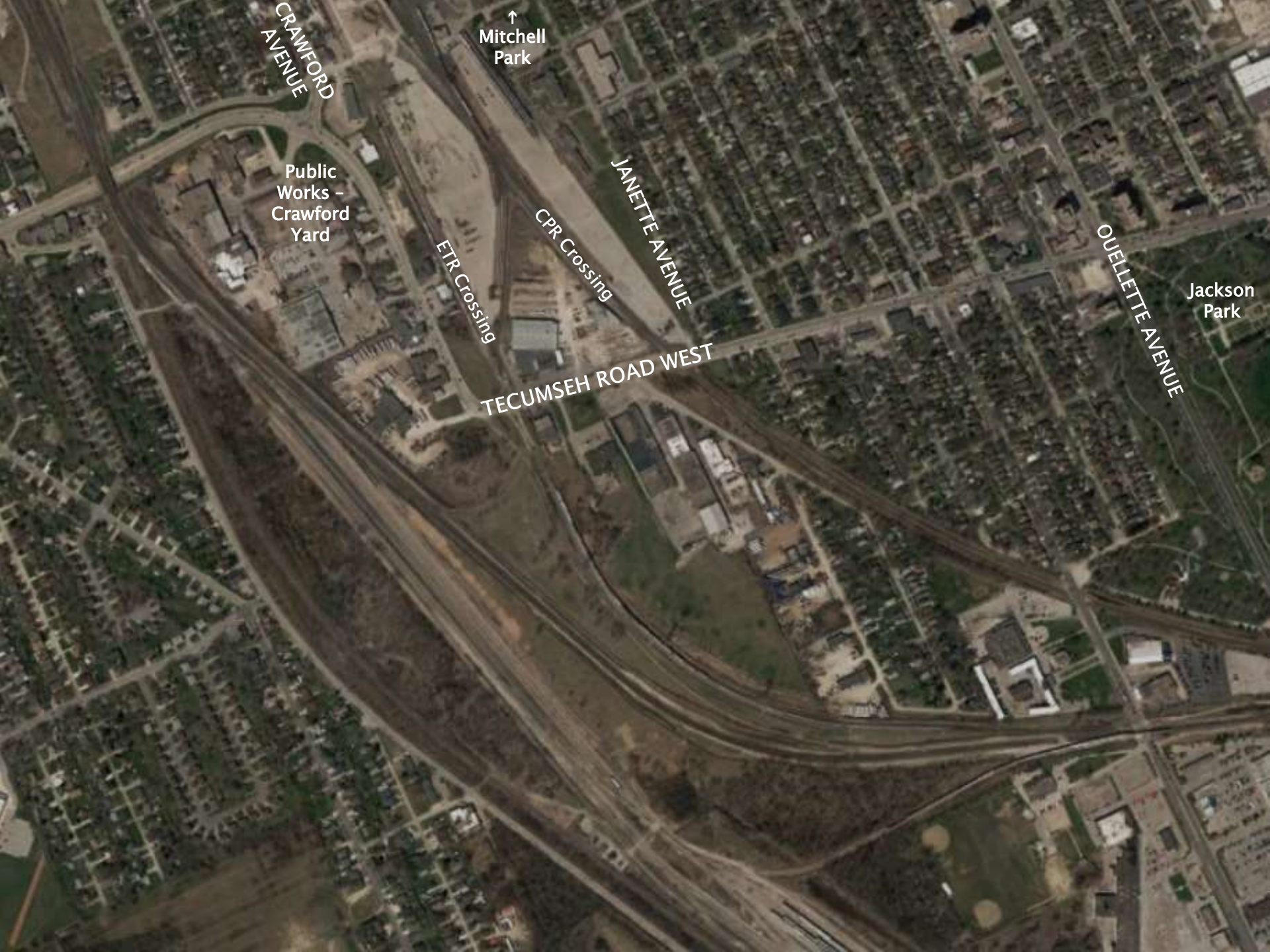


# Introduction

- ▶ This Environmental Assessment will establish an enhanced urban design and transportation plan along Tecumseh Road West by:
  - Addressing the transportation needs identified in the Transportation Master Plan, Bicycle Use Master Plan, Official Plan, Community Based Strategic Rail Study and Transit Master Plan
  - Creating an entry point into Windsor (“Civic Way”)
  - Matching the community design objectives
  - Addressing safety concerns identified by the study
  - Undertaking a review of current conditions and projected capacity demands

# Problem Statement

- ▶ Meet the safety and operational needs of:
  - Rail crossings
  - All modes of transportation:
    - Pedestrians
    - Cyclists
    - Transit
    - Heavy Trucks
    - Automobiles
    - Emergency services vehicles
- ▶ Access to service businesses; and
- ▶ Meet the Official Plan goals for the land use planning and Civic Way arterial road functional class of street



CRAWFORD AVENUE

↑  
Mitchell Park

Public Works -  
Crawford  
Yard

ETR Crossing

CPR Crossing

JANETTE AVENUE

TECUMSEH ROAD WEST

QUELETTE AVENUE

Jackson Park

# Project Approach

# Objectives

- ▶ Reviewing the at-grade rail crossing for compliance to current regulations
- ▶ Accommodating all roadway users
- ▶ Developing a cost effective short, medium and long term transportation plan for the corridor.



# Study Approach

- ▶ An initial Study Design Document was prepared to:
  - Present the need and justification
  - Outline the proposed work program
  - Define the Study Area
  - Identify preliminary alternatives
  - Coarse screen alternatives based on significant environmental effects and/or cost

# EA Approach

The study will complete all necessary phases of the Schedule C Municipal Class EA, and will:

- ▶ Consider all reasonable alternatives
- ▶ Provide a comprehensive assessment of the environment
- ▶ Utilize a systematic and traceable evaluation of net effects
- ▶ Undertake a comprehensive public consultation program
- ▶ Provide clear and concise documentation of the decision-making process and public consultation program

# EA Phases

**Phase 1** – Identify the Problem

**Phase 2** – Alternative Solutions – **We are here**

**Phase 3** – Alternative Design Concepts for the Preferred Solution

**Phase 4** – Environmental Study Report (ESR)

**Phase 5** – Implementation

# Study Issues & Existing Conditions

# Study Issues

Key considerations include:

- ▶ Proximity of the ETR and CPR at-grade rail crossings
- ▶ Accommodating existing businesses and residential properties
- ▶ Accommodating active transportation
- ▶ Poor roadway geometry and sightlines
- ▶ Existing utility conflicts
- ▶ Real and perceived delays at crossing

# Proximity of Rail Crossings



# Accommodating Pedestrians



# Accommodating Wheelchairs





# Accommodating Cyclists



# Accommodating Emergency Vehicles



# Accommodating Cyclist & Pedestrian Conflicts



# Poor Roadway Geometry



# Existing Utility Conflicts



# Traffic Delays at Crossing



# Traffic Delays at Crossing



# Aging Infrastructure





# Community Café

# Café Process

- ▶ Participants will be divided into small groups to allow conversations and dialogue.
- ▶ At the conclusion of a discussion period participants will be asked to change tables and mix between topics
- ▶ Participants are free to sit out a session
- ▶ A recorder will make notes of the discussion of problems and potential solutions, and invoke questions to generate discussion

# Café Approach

- ▶ Focus on dialogue between neighbours
- ▶ We are here to listen to your values and priorities
- ▶ Informal discussion of topics
- ▶ Encouraged to doodle sketches
- ▶ Build consensus of perspectives
- ▶ Discussion will be recorded

# Café Discussion Topics

- ▶ Vehicle safety and delays
- ▶ Pedestrian safety
- ▶ Cycling safety
- ▶ ‘Civic Way’ design elements