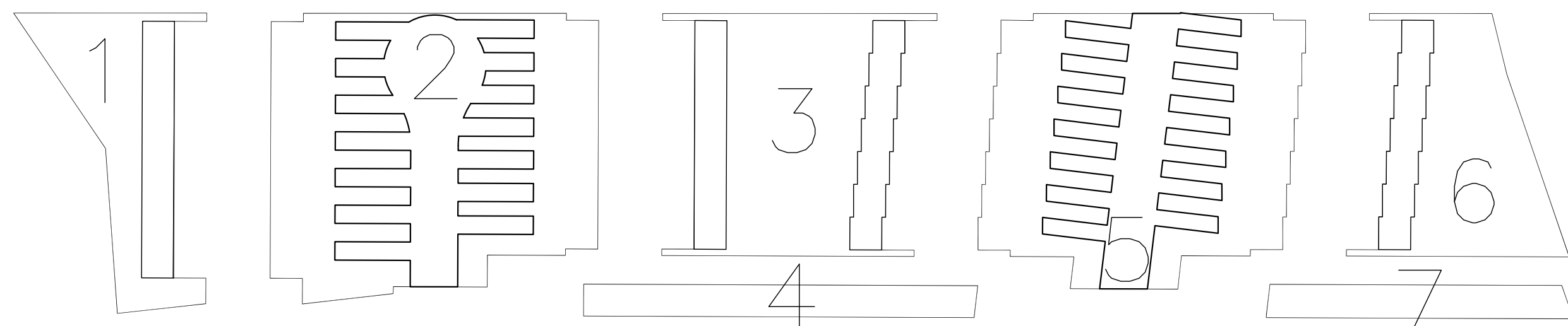


AREA #	TOTAL	BLDG.	PAVEMENT	LANDSCAPE	WEIGHTED COEFF.
1	941	0	289	651	
2	3,036	1,104	1,195	737	
3	1,729	0	516	1,213	
4	441	0	0	441	
5	2,698	1,044	975	679	
6	1,198	0	259	939	
7	351	0	0	351	
TOTAL	10,393	2,148	3,234	5,012	0.59

CALCULATION OF RUNOFF COEFFICIENT



Storm Calculation

Rational Formula: $Q_p = CIA$ ($Q = 0.0028ACI$ metric)

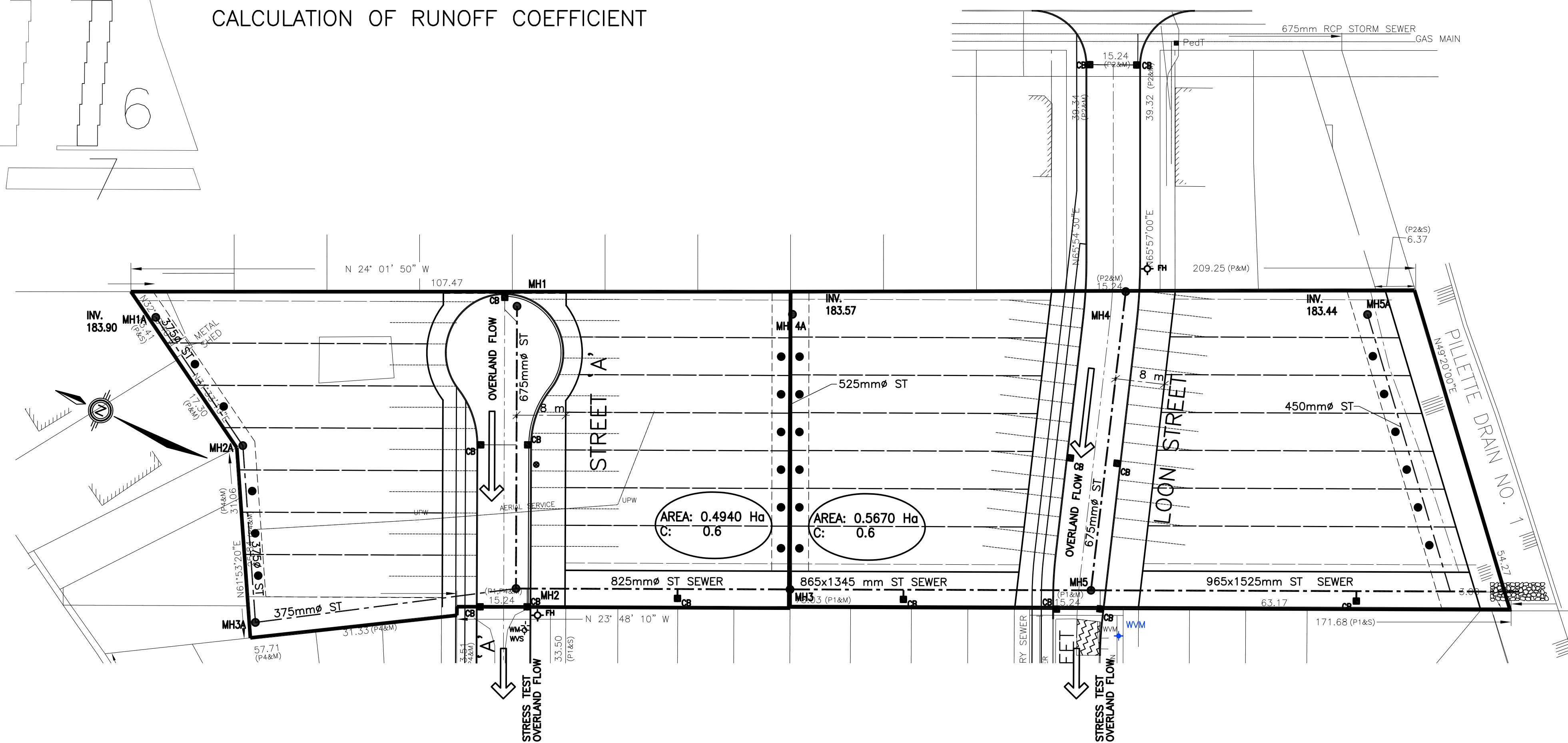
Q_p = Peak Runoff Rate (m^3/s)

C = Runoff Coefficient

I = Rainfall Intensity (mm/hr)

A = Drainage Area (hectares)

Runoff Coefficient = 0.60



Sanitary Calculation

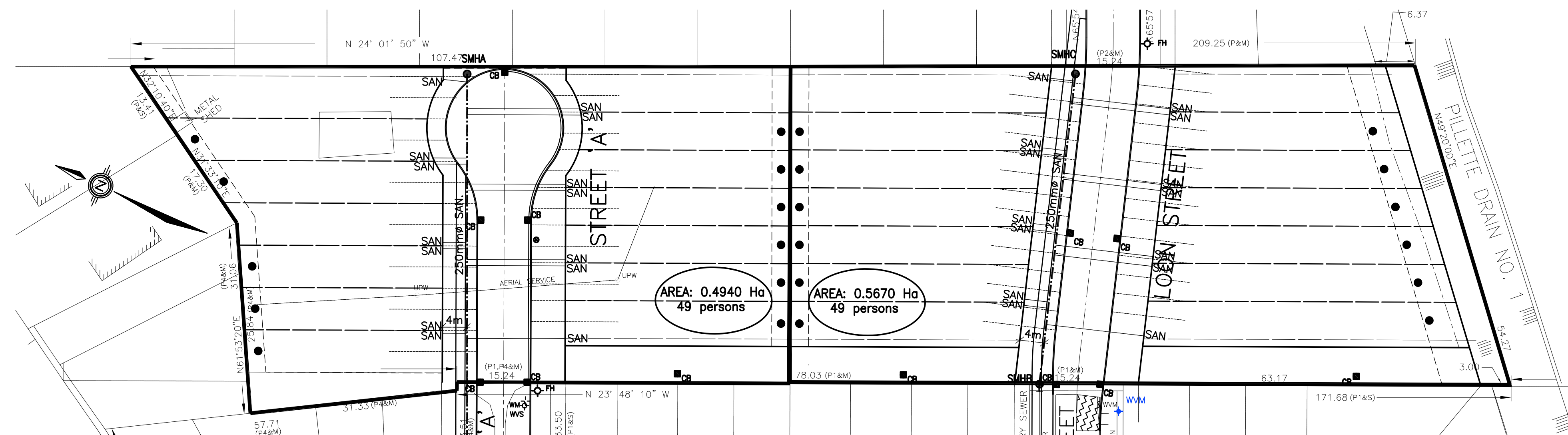
Q (Ultimate) = Residential Sewage Flow x Ultimate Population Served x Ultimate Flow Factor + Infiltration

Residential sewage flow = 0.0042 litre/second/capita

Residential Population Density = 3.5 persons / unit

Ultimate Flow Factor = 6.00

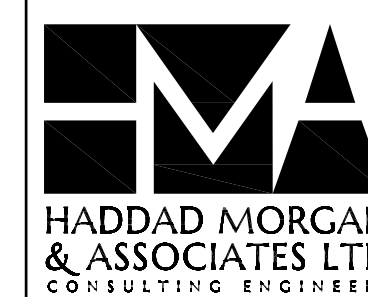
Infiltration = 0.1560 litre/second/hectare



CHG.	DESCRIPTION	DD-MM-YY	BY
0	APPROVAL	09-05-24	CG

APPROVED AS TO FORM, IN RELIANCE UPON THE PROFESSIONAL SKILL AND ABILITY OF HADDAD MORGAN AND ASSOCIATES LTD. AS TO DESIGN AND SPECIFICATION.

Mark Winterton, P.Eng.
Commissioner of Infrastructure Services
THE CORPORATION OF THE CITY OF WINDSOR



DESIGNED BY: C.G.
DRAWN BY: C.G.
CHECKED BY: W.T.
SCALE: AS NOTED
DATE: OCTOBER 2022

SECRET GARDEN RESIDENTIAL SUBDIVISION

WINDSOR

SANITARY AND STORM DRAINAGE PARAMETERS AND BOUNDARIES

PROJECT NO.: 19-134
ACCOUNT NO.: _____

DWG. NO.: