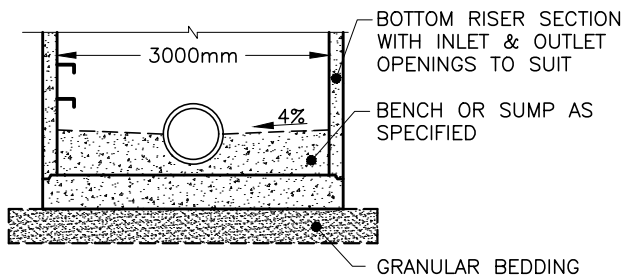
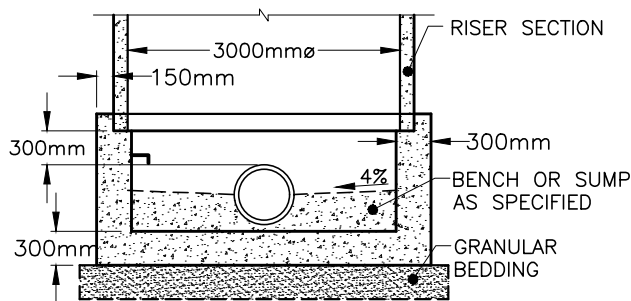


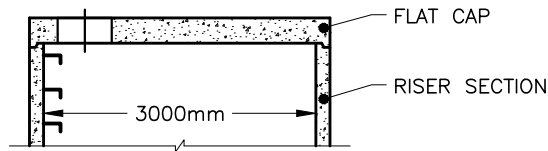
ALTERNATIVES



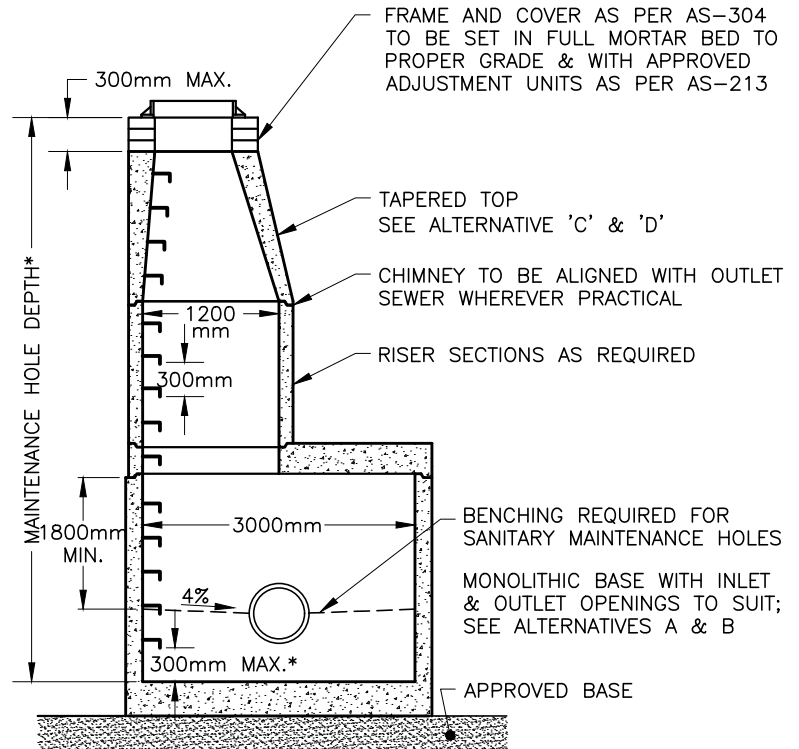
A. PRECAST SLAB BASE



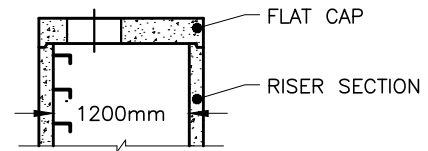
B. CAST-IN-PLACE BASE



C. 3000mm PRECAST FLAT CAP



*MEASURED TO BENCHING OR SUMP, WHICHEVER IS APPLICABLE


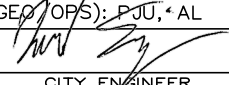


D. 1200mm PRECAST FLAT CAP

NOTES:

1. THE SUMP IS MEASURED FROM THE LOWEST INVERT, FOR SUMP DETAIL SEE AS-314A.
2. GRANULAR 'A' BACKFILL SHALL BE PLACED AND COMPACTED IN LIFTS NOT EXCEEDING 300mm TO A MINIMUM WIDTH OF 300mm AROUND THE ENTIRE PERIMETER OF THE MAINTENANCE HOLE.
3. PRECAST CONCRETE COMPONENTS SHALL BE ACCORDING TO OPSD 701 & 703 SERIES.
4. a) SANITARY MAINTENANCE HOLES SHALL HAVE GASKETED FLEXIBLE WATERTIGHT CONNECTIONS FOR ALL INLET AND OUTLET PIPES, UNLESS OTHERWISE APPROVED BY THE CITY ENGINEER.
b) STORM INLET AND OUTLET SUPPORT SHALL BE CLASS 'A' BEDDING TO FIRST PIPE JOINT BEYOND MANHOLE (RIGID PIPE) OR HAVE A FLEXIBLE JOINT WITHIN 900mm OF MAINTENANCE HOLE WALL (RIGID OR FLEXIBLE PIPE) WITH CLEAR STONE BEDDING.
5. MAINTENANCE HOLE STEPS IN ACCORDANCE WITH AS-305.
6. FROST STRAPPING FOR SANITARY MAINTENANCE HOLES AS PER AS-314 TO EXTEND 2.0m BELOW FINISHED GRADE (1.0m BELOW FROST DEPTH).
7. CAST-IN-PLACE BASES TO BE TO THE SATISFACTION OF THE CITY ENGINEER.
8. WATERPROOFING MEMBRANE FOR SANITARY MAINTENANCE HOLES AS PER AS-314, SHALL BE INSTALLED PRIOR TO INSTALLATION OF FROST STRAPPING.
9. STRUCTURES EXCEEDING 5.0m IN DEPTH SHALL INCLUDE SAFETY PLATFORM ACCORDING TO APPLICABLE OPSD, UNLESS OTHERWISE DIRECTED BY THE CITY ENGINEER.

NOT TO SCALE

 CITY OF WINDSOR ENGINEERING DEPARTMENT	
PRECAST MAINTENANCE HOLE 3000mm DIAMETER	
DR'N BY: SS, NB, AZ	DATE: JUN, 2017
REV. DATE: MAR, 2025	CH'KD BY (ENG): PM, SC
CH'KD BY (GEOTECH): PJU, AL	PASSED BY: FM
 CITY ENGINEER	
AS-314E	