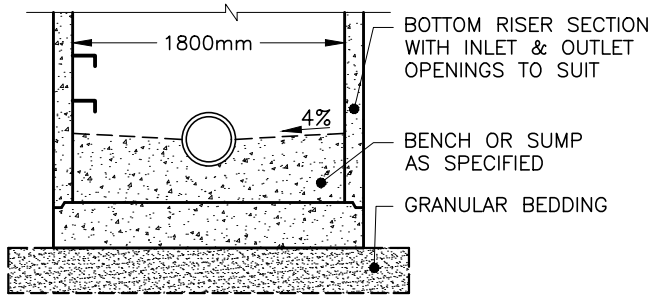
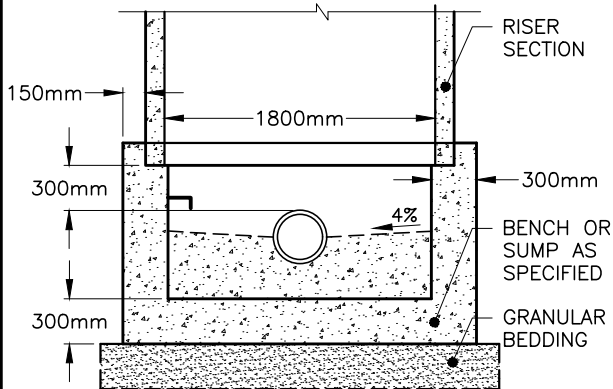


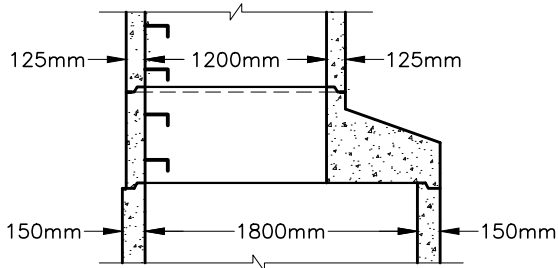
# ALTERNATIVES



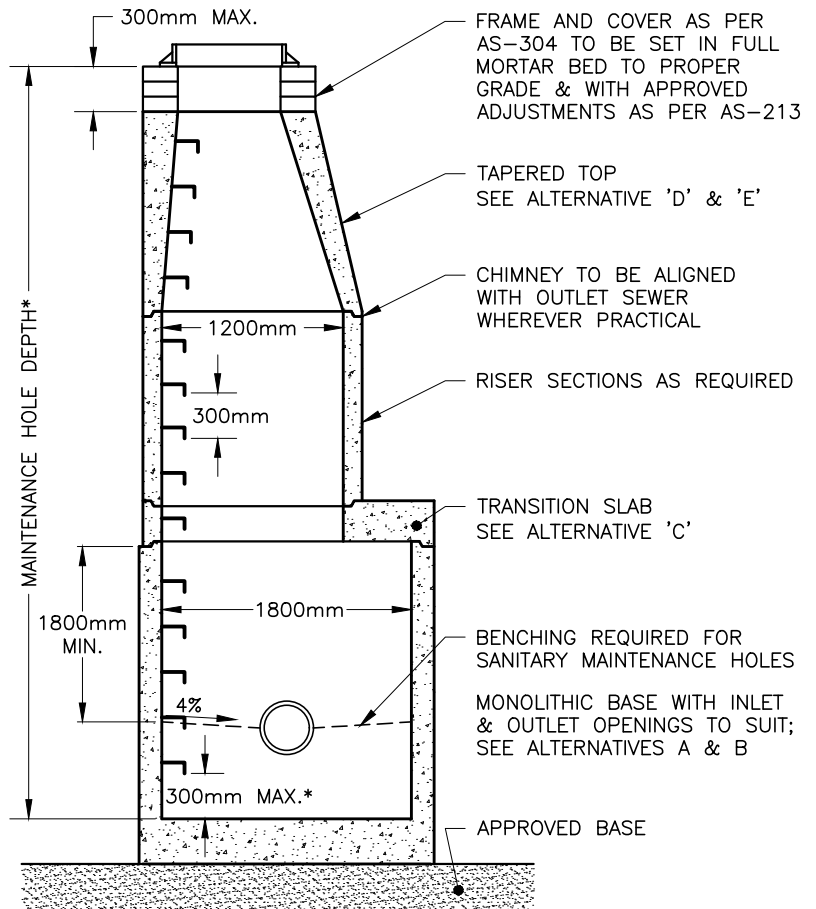
**A. PRECAST SLAB BASE**



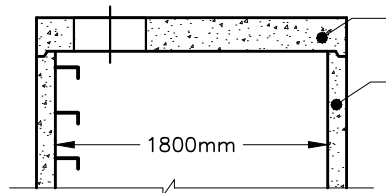
**B. CAST-IN-PLACE BASE**



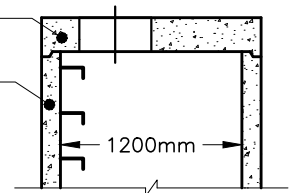
**C. TAPERED TRANSITION SLAB**



\*MEASURED TO BENCHING OR SUMP, WHICHEVER IS APPLICABLE



**D. 1800mm PRECAST FLAT CAP**



**E. 1200mm PRECAST FLAT CAP**

## NOTES:

1. THE SUMP IS MEASURED FROM THE LOWEST INVERT, FOR SUMP DETAIL SEE AS-314A.
2. GRANULAR 'A' BACKFILL SHALL BE PLACED AND COMPACTED IN LIFTS NOT EXCEEDING 300mm TO A MINIMUM WIDTH OF 300mm AROUND THE ENTIRE PERIMETER OF THE MAINTENANCE HOLE.
3. PRECAST CONCRETE COMPONENTS SHALL BE ACCORDING TO OPSD 701 & 703 SERIES.
4. a) SANITARY MAINTENANCE HOLES SHALL HAVE GASKETED FLEXIBLE WATERTIGHT CONNECTIONS FOR ALL INLET AND OUTLET PIPES, UNLESS OTHERWISE APPROVED BY THE CITY ENGINEER.  
b) STORM INLET AND OUTLET SUPPORT SHALL BE CLASS 'A' BEDDING TO FIRST PIPE JOINT BEYOND MANHOLE (RIGID PIPE) OR HAVE A FLEXIBLE JOINT WITHIN 900mm OF MAINTENANCE HOLE WALL (RIGID OR FLEXIBLE PIPE) WITH CLEAR STONE BEDDING.
5. MAINTENANCE HOLE STEPS IN ACCORDANCE WITH AS-305.
6. FROST STRAPPING FOR SANITARY MAINTENANCE HOLES AS PER AS-314 TO EXTEND 2.0m BELOW FINISHED GRADE (1.0m BELOW FROST DEPTH).
7. WATERPROOFING MEMBRANE FOR SANITARY MAINTENANCE HOLES AS PER AS-314, SHALL BE INSTALLED PRIOR TO INSTALLATION OF FROST STRAPPING.
8. STRUCTURES EXCEEDING 5.0m IN DEPTH SHALL INCLUDE SAFETY PLATFORM ACCORDING TO APPLICABLE OPSD, UNLESS OTHERWISE DIRECTED BY THE CITY ENGINEER.

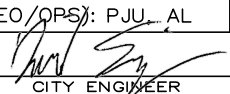
NOT TO SCALE



**CITY OF WINDSOR**

ENGINEERING DEPARTMENT

## PRECAST MAINTENANCE HOLE 1800mm DIAMETER

DR'N BY: NB, AZ	DATE: MAR, 2017
REV. DATE: MAR, 2025	CH'KD BY (ENG): PM, SC
CH'KD BY (GEO/OPS): PJJ, AL	PASSED BY: FM
 CITY ENGINEER	
AS-314C	