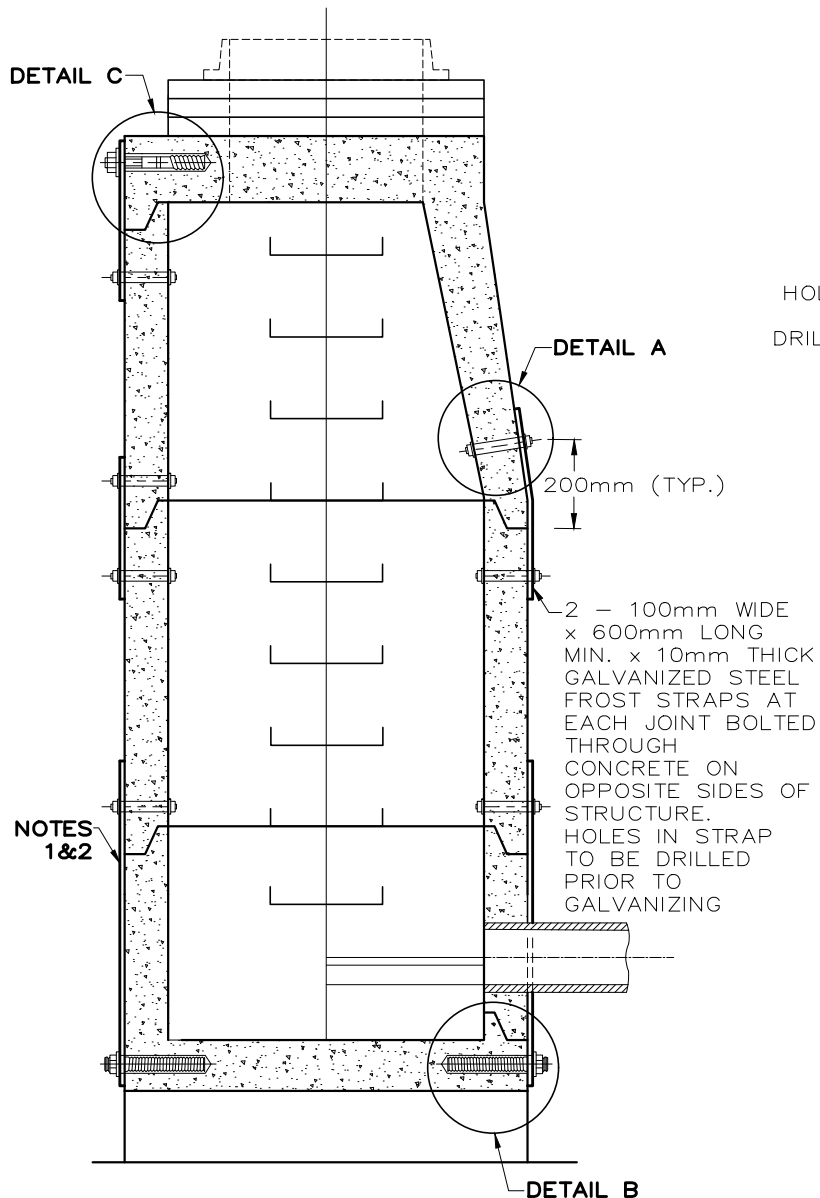


DETAIL C



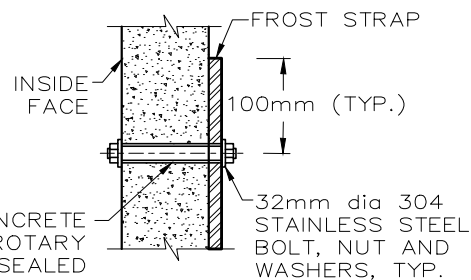
NOTES
1&2

DETAIL A

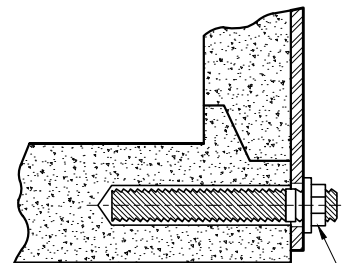
200mm (TYP.)

2 - 100mm WIDE
x 600mm LONG
MIN. x 10mm THICK
GALVANIZED STEEL
FROST STRAPS AT
EACH JOINT BOLTED
THROUGH
CONCRETE ON
OPPOSITE SIDES OF
STRUCTURE.
HOLES IN STRAP
TO BE DRILLED
PRIOR TO
GALVANIZING

DETAIL B

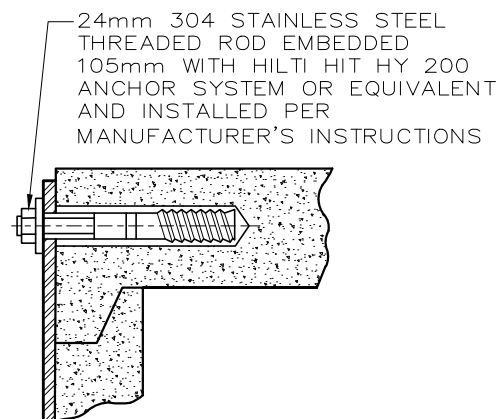


DETAIL A



24mm 304 STAINLESS STEEL
THREADED ROD EMBEDDED
105mm WITH HILTI HIT HY 200
ANCHOR SYSTEM OR EQUIVALENT
AND INSTALLED PER
MANUFACTURE'S INSTRUCTIONS

DETAIL B





DETAIL C

NOT TO SCALE

NOTES:

1. EACH SANITARY MAINTENANCE HOLE JOINT SHALL BE EXTERNALLY WRAPPED WITH A 300mm WIDE (MIN.) WATERPROOFING MEMBRANE. WATERPROOFING MEMBRANE SHALL BE INSTALLED OVER FROST STRAPS, ENSURING MEMBRANE EXTENDS 100mm MIN. BEYOND LENGTH AND WIDTH OF FROST STRAPS.
2. TWO FROST STRAPS TO BE INSTALLED AT EACH SANITARY MANHOLE JOINT TO A MINIMUM DEPTH OF 2.0m BELOW FINISHED GRADE (1.0m BELOW FROST DEPTH).
3. FROST STRAPS SHALL BE PLACED SO THEY DO NOT INTERFERE WITH SEWER PIPE OPENINGS AND THE STEPS.
4. GALVANIZING SHALL BE ACCORDING TO CAN/CSA G164. ALL STAINLESS STEEL BOLTS AND THREADED RODS SHALL BE CUT FLUSH WITH NUTS.
5. ALL DIMENSIONS ARE IN MILLIMETERS UNLESS OTHERWISE SHOWN.
6. TO BE READ IN CONJUNCTION WITH AS-314A, 314B, 314C, 314D, AND 314E.
7. SANITARY MAINTENANCE HOLE FRAME AND COVERS, FOR SANITARY SEWERS 600mm IN DIAMETER OR LESS, SHALL BE SEALED USING HDPE DISH INSERT WITH NEOPRENE GASKET, UNLESS OTHERWISE APPROVED BY THE CITY ENGINEER. THE INSERT SHALL HAVE A LIFT STRAP AND A VENTILATION VALVE WHICH VENTS AT 1.0 PSI OR LESS.

 CITY OF WINDSOR ENGINEERING DEPARTMENT	
WATERPROOFING AND FROST STRAPPING FOR SANITARY MAINTENANCE HOLES	
DR'N BY: AZ	DATE: DEC, 2024
REV. DATE: MAR, 2025	CH'KD BY (ENG): PM, SC
CH'KD BY (C/O OPS): PJU, AL	PASSED BY: FM
 CITY ENGINEER	
AS-314	