

REPORT NO. 315 of the
ENVIRONMENT, TRANSPORTATION & PUBLIC SAFETY
STANDING COMMITTEE
of its meeting held October 21, 2015

Present: **Councillor Fred Francis**
 Councillor Chris Holt
 Councillor Hilary Payne (Vice Chair)
 Councillor Paul Borrelli

Regrets: **Councillor Bill Marra**

That the following recommendations of the Environment, Transportation and Public Safety Standing Committee **BE APPROVED:**

Moved by Councillor Borrelli, seconded by Councillor Francis,

That the Report of the City Engineer dated September 9, 2015 entitled "CQ24-2015 Christ the King School Area Concerns – Grand Marais Road West at Dominion Boulevard" **BE RECEIVED** for information.

Carried.

LiveLink 17928 ST2015

Clerk's Note: The report of the City Engineer dated September 9, 2015 entitled "CQ24-2015 – Christ the King School Area Concerns – Grand Marais Road West at Dominion Boulevard" is attached as background information.

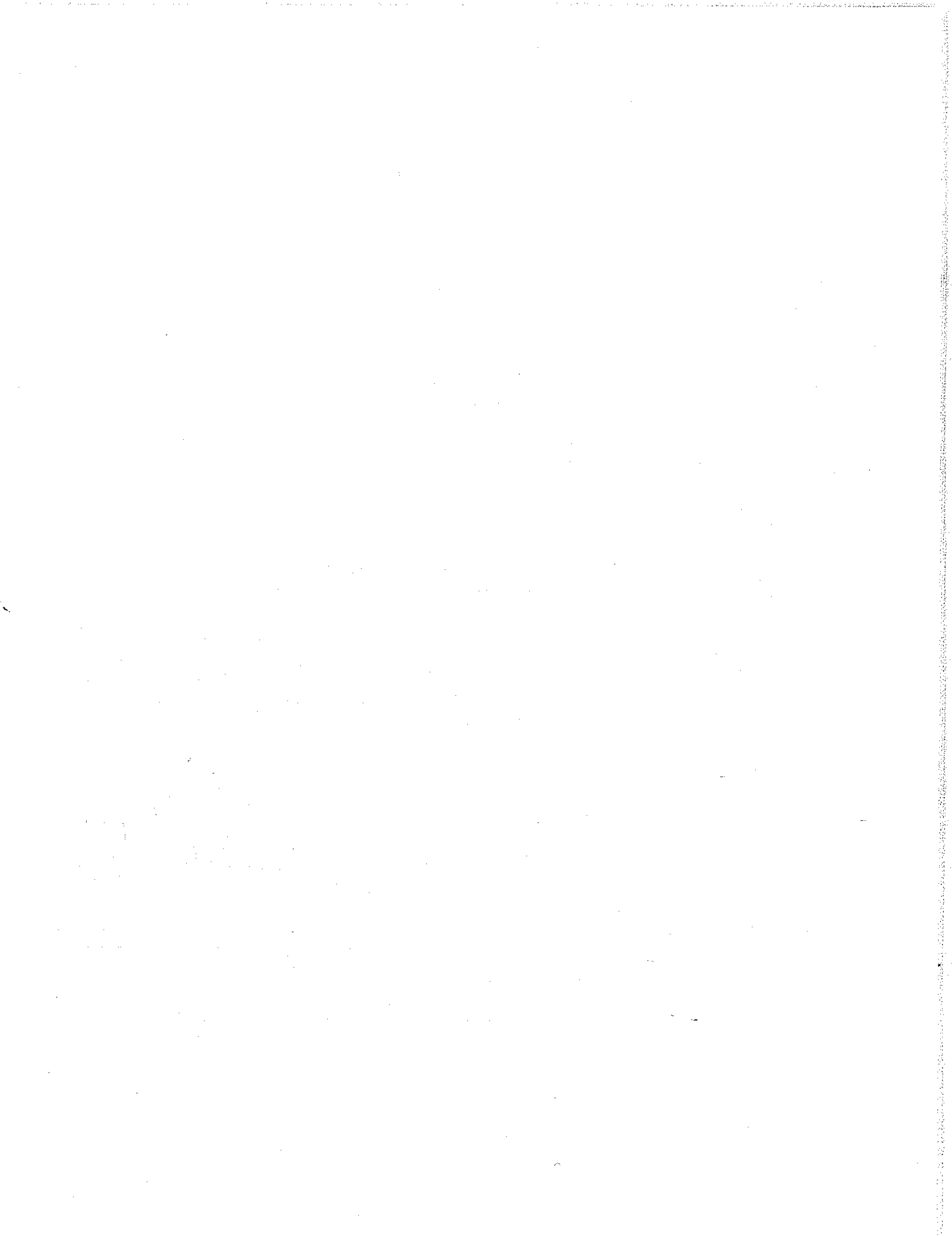


CHAIRPERSON



SUPERVISOR OF COUNCIL SERVICES

NOTIFICATION:	
NAME	CONTACT INFORMATION
Cathy Nelson, Principal Christ the King Catholic Elementary School	Cathy_nelson@wecdsb.on.ca



THE CORPORATION OF THE CITY OF WINDSOR
Environment, Transportation & Public Safety Standing Committee -
Admin Report - Environment Transportation



MISSION STATEMENT:

"Our City is built on relationships – between citizens and their government, businesses and public institutions, city and region – all interconnected, mutually supportive, and focused on the brightest future we can create together."

LiveLink REPORT #: 17928 ST2015	Report Date: September 9, 2015 <i>5037 pg-09/10/15:eb</i>
Author's Name: Andrew Dowie	Date to Standing Committee: October 21, 2015
Author's Phone: 519 255-6247 ext. 6018	Classification #:
Author's E-mail: adowie@citywindsor.ca	

To: Environment, Transportation & Public Safety Standing Committee

Subject: CQ24-2015 - Christ the King School Area Concerns - Grand Marais Road West at Dominion Boulevard

1. RECOMMENDATION:

City Wide: _____ Ward(s): 10

That Report 17928 CQ24-2015 Christ the King School Area Concerns – Grand Marais Road West at Dominion Boulevard BE RECEIVED for information.

EXECUTIVE SUMMARY:

N/A

2. BACKGROUND:

At the meeting of April 20, 2015, Council Question CQ24-2015 was asked by Councillor Borrelli, which reads:

"Asks in the matter of Christ the King elementary school, there is a concern by parents of safety for their children. It is asked that Administration assess the corner of Dominion and Grand Marais regarding safety and options and alternatives to accommodate the concerns of parents."

A previous report to Council responding to CQ140-2005 identified similar concerns in early 2006. As part of that process, the City initiated the following on a pilot basis:

- A Crossing Guard was posted to the Grand Marais / Longfellow intersection, and its performance was assessed;
- Temporary installation of signage at the crossing was completed; and
- "No Stopping" regulations were installed on the North and South sides of Grand Marais from Dominion to Alexandra.

These measures were piloted in early 2007, and continued until the end of the 2006-2007 school year. In the subsequent review of the pilot, the School Board and the City jointly concluded that a crossing guard was not warranted based on technical metrics.

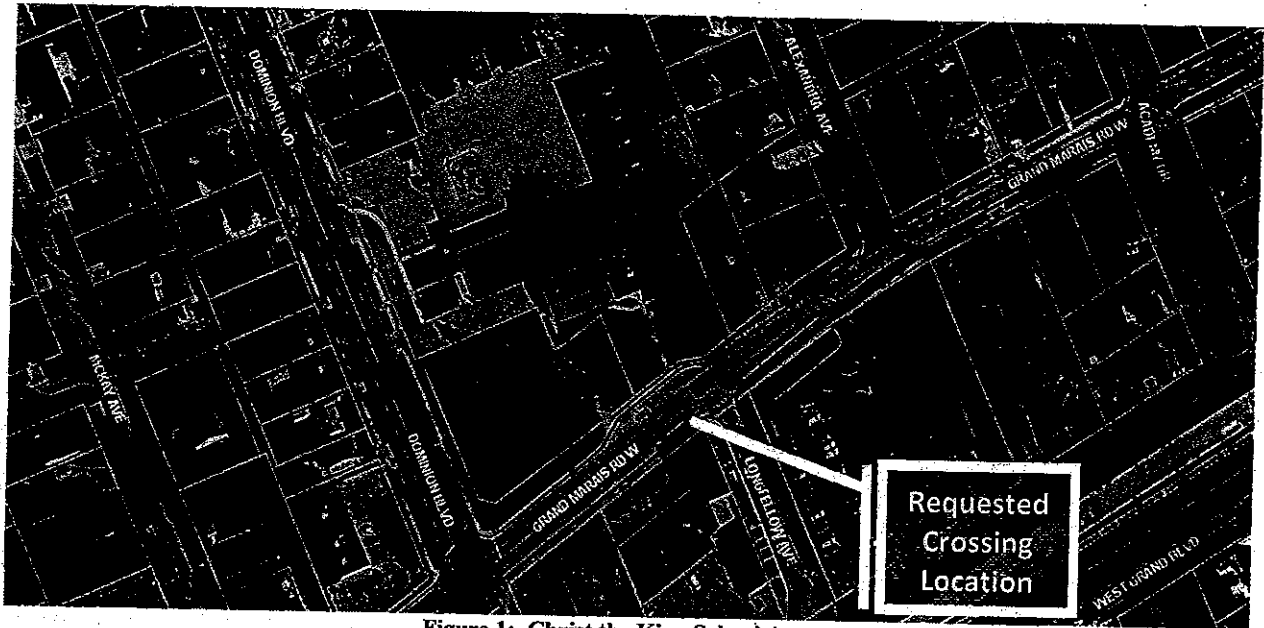


Figure 1: Christ the King School Area

During the pilot program wherein the crossing guard was relocated, the outcomes set out were not met with the hoped-for success. Parents were not typically inclined to park at the Salvation Army building and depart without ensuring that their children reached the school safely. Rather, those parents using off-site parking typically accompanied their children to the school if they decided to park. Some instances of illegal drop-offs on eastbound Grand Marais were also noted, obstructing sightlines and putting the crossing guard and children at risk by developing added congestion. Other parents used the westbound Kiss-and-Ride drop-off area with success.

In late 2012 the No Stopping boundaries were amended to be from Dominion Boulevard to a point 57 metres east of Dominion Boulevard and a point 108 metres west of Dominion Boulevard to Alexandra Avenue from 8:30 AM to 4:00 PM - Monday to Friday.

The City of Windsor website lists the standard procedure to request Crossing Guard locations. Requests are only accepted from the School Principal. On April 27, 2015, the City formally received a letter addressed on behalf of the school community requesting relocation of the existing crossing guard deployed to Grand Marais West at Dominion Boulevard to Grand Marais West at Longfellow from Cathy Nelson, principal of Christ the King Catholic Elementary School. This proposal is for the same location of the previous pilot project and is located 90 metres from the current crossing guard location.

The immediate northeast corner of Dominion and Grand Marais West is currently under re-development. Christ the King Church and rectory were formerly located on the site until their demolition in 2008. Construction of Medical Offices, a pharmacy and a retail plaza is now under way. The development has been approved under Site Plan Control.

3. DISCUSSION:

Administration has assessed and reviewed the Grand Marais West/Dominion intersection for possible actions in response to the Council Question. The Council Question is understood to be requesting general improvements to pedestrian safety at the Grand Marais West / Dominion intersection for students in light of the School/Parent Council request to move the existing crossing guard to a mid-block location.

Existing Conditions

Both Dominion and Grand Marais West are designated collector roads. The intersection is signalized including the provision of pedestrian indicators and painted crosswalks. The area traffic volumes are recorded as follows:

Average Annual Traffic Volumes

Year	East of Dominion (adjacent to Christ the King School)	West of Dominion	Dominion South of E.C. Row
2005	3,000	9,700	20,300
2010	2,800	8,700	22,000
2014	2,800	8,100	21,400

As reported in the 2013 Road Safety Report, three collisions were reported to police over a 5-year period from 2009 to 2013 between the Grand Marais/Longfellow intersection and Dominion Boulevard. This section is ranked #18 for midblock, high collision locations through the Road Safety Report. The Grand Marais/Dominion intersection is ranked #67 for signalized intersections. Two of the collisions during this period involved pedestrians.

Current Studies

The Central Box Municipal Class Environmental Assessment (EA) is currently under way. This EA includes the Dominion Road corridor from approximately Ojibway St. southerly to Grand Marais Road West, including the Dominion/Grand Marais intersection. Concepts released at a recent Public Information Centre identified potential improvements to traffic on Dominion including a narrowing of travel lanes and introduction of bicycle lanes.

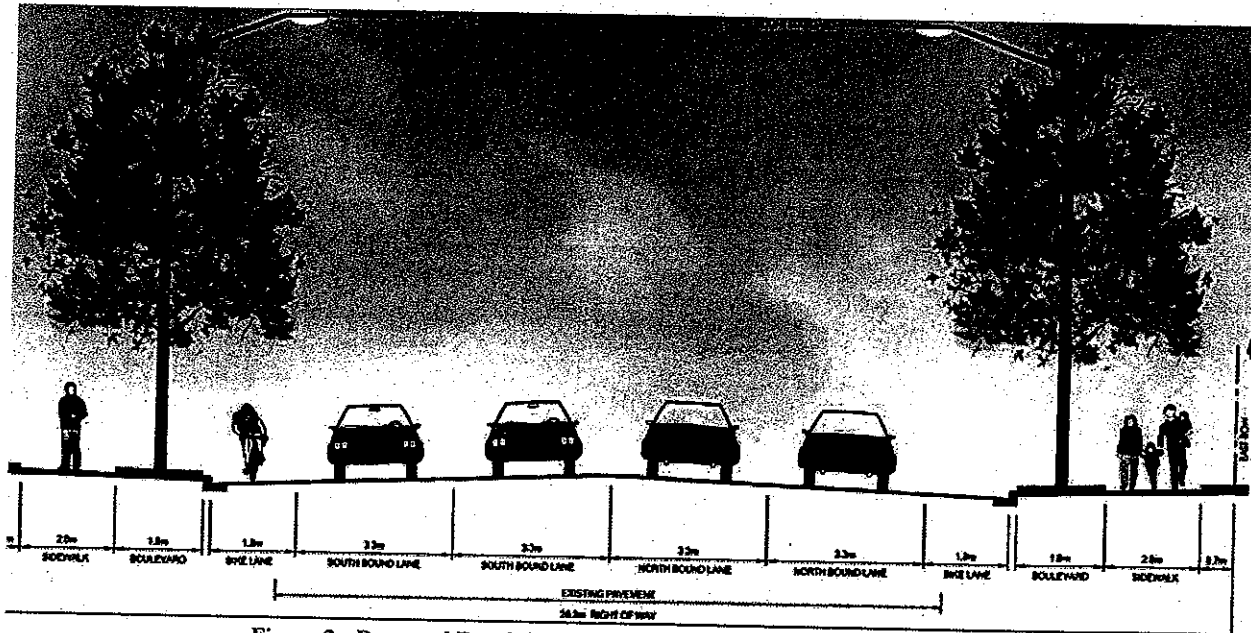


Figure 2: Proposed Dominion Boulevard Cross-Section, Central Box EA

A School Area Policy is currently under development to ensure a consistent citywide approach to the use of public right-of-ways within the vicinity of City of Windsor school sites.

Present-Day Situation

A crossing guard has been deployed at the intersection of Dominion and Grand Marais West that services the students of Christ the King school.

The request received from both the School Principal and the parent's council would formalize a student crossing 90 metres east of the signalized intersection. At this location, or alternatively one on the east side of Longfellow, students would be directed to cross within the east portion of the existing Kiss-and-Ride which increases risk of collision and reduces Kiss-and-Ride capacity. A warrant review for a crossing guard at the intersection of Grand Marais Road West and Longfellow Road was subsequently undertaken on May 26. The warrants were not met based on the undertaken gap analysis and number of students. It is noted that this location had fewer students observed crossing than the present-day location at Dominion and Grand Marais West.

Ontario Traffic Manual Book 15 discourages crossing pedestrians where crossing locations with traffic control devices exist in close proximity.

Summary

The assessment for the corner of Grand Marais West and Longfellow concludes that the current warrants for crossing guards have not been met based on the following:

- Traffic volumes have decreased in the area.
- The on-site gap study and associated pedestrian counts undertaken in May 2015 have determined that sufficient gaps in traffic exist for pedestrians to cross.
- The nearby traffic signal at Dominion Blvd., together with relatively low traffic volumes directly adjacent to the school on Grand Marais Road West would provide a higher level of protection for the crossing guard and for crossing pedestrians as described by the Ontario Traffic Manual Book 15.
- The Central Box EA proposes some improvements to vehicular and active transportation on Dominion Boulevard that will result in safer travel options for all residents.

The protection of the students and parents can be best achieved through the following options and alternatives that can encourage patrons of Christ the King School to adopt best practices:

- Reducing the number of vehicles and vehicle congestion that is created by dropping off students in the vicinity of the school, by choosing to support bus use and active transportation options unless absolutely necessary;
- Respecting stopping restrictions in the vicinity of the school including posted No Stopping zones;
- Adopting Kiss and Ride safe use practices when student drop-off is required; and
- Crossing Grand Marais Road West at the protected crossing location with the Crossing Guard (intersection with Dominion) even when utilizing the Salvation Army parking area.

4. RISK ANALYSIS:

Keeping the crossing guard deployed at its current location leaves the least risk for students, for the guard, and for the Corporation as a whole. Most risks, including Financial, Operational and Reputational, do not change with this recommendation. Keeping the crossing guard in place at its existing location maintains the present day risk. It also ensures that the integrity of the warrant system is upheld and that resources are prioritized to areas that require them based on defined warrants and observed conditions. The current location also maintains a reduced health

and safety risk for all in avoiding a crossing that would be obscured by observed illegal traffic movements. Finally, maintaining the current location would maintain encouragement for parents to use the Salvation Army parking lot and cross Grand Marais West with their children.

5. FINANCIAL MATTERS:

N/A

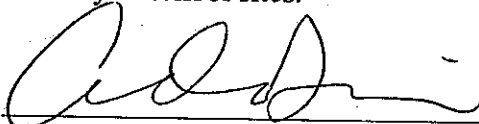
6. CONSULTATIONS:

Communications were received from the Christ the King School Community with respect to this report.

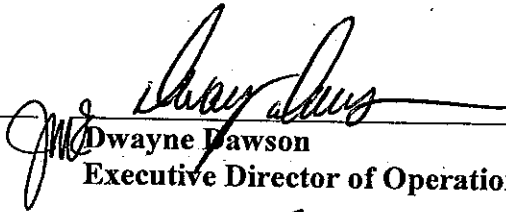
7. CONCLUSION:

Maintaining the existing Crossing Guard location at Dominion and Grand Marais Road West, together with encouraging school visitors to respect no stopping zones and to adopt safe practices for pick-up and drop-off is recommended.

Council will be considering the Citywide School Area Policy in the near future for recommendations respecting opportunities for consistent improvements within the public right-of-way at school sites.



Andrew Dowie
Policy Analyst



Dwayne Dawson
Executive Director of Operations



Mark Winterton
City Engineer and Corporate Leader
Environmental Protection and
Transportation



Helga Reidel
Chief Administrative Officer

AD

APPENDICES:

DEPARTMENTS/OTHERS CONSULTED:

Name: Mary DiMenna, Crossing Guard Coordinator
Phone #: 519 255-6247 ext. 6104

NOTIFICATION :

Name	Address	Email Address	Telephone	FAX
Cathy Nelson, Principal Christ the King Catholic Elementary School	1200 Grand Marais Road West, Windsor, ON N9E 1C9	cathy_nelson@wecds b.on.ca	(519) 969-2299	(519) 969- 5372

