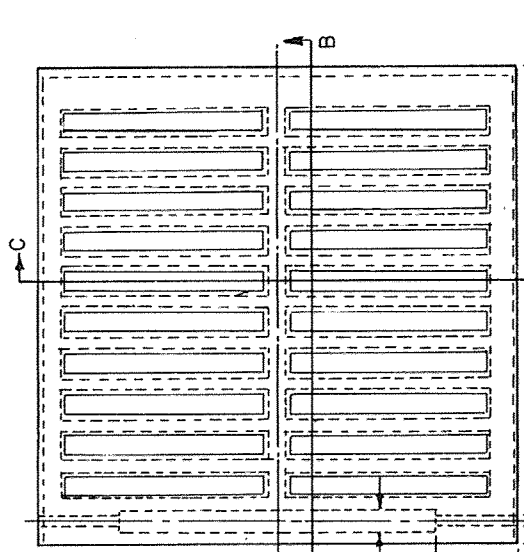
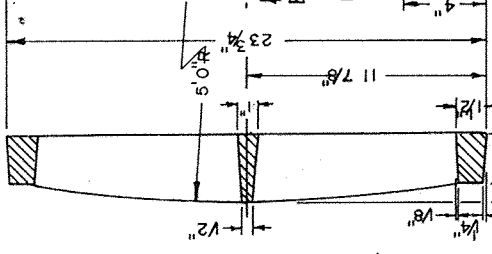


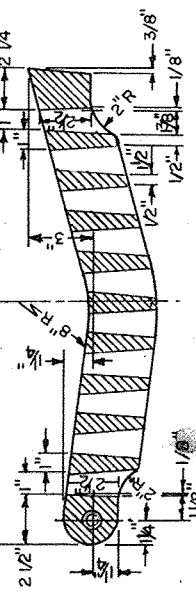
FRAME PLAN



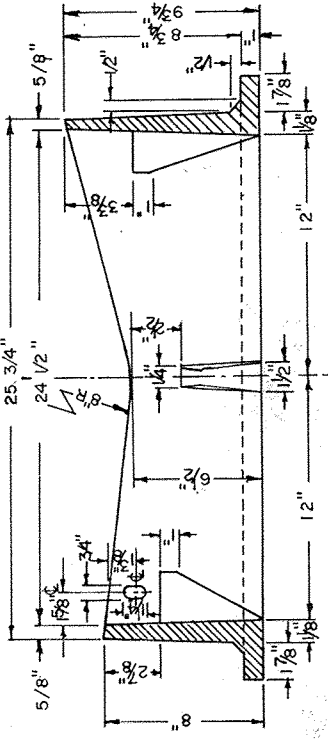
GRATE PLAN



GRATE SECTION C-C



GRATE SECTION B-B



FRAME SECTION A-A

- NOTES:**
- 1.) Allowable tolerances:
 Dimensions 12 in. or less - $\pm 1/8$ in.
 Dimensions over 12 in. up to and including 36 in. - $\pm 1/4$ in.
 - 2.) Marking:
 a.) C.O.W is to be cast on both frame and grate as shown in raised letters of lin. minimum size.
 b.) The initials or mark of the manufacturer are to be distinctly cast in raised letters on both frame and grate.

MATERIAL TO BE CAST IRON AS PER A.S.T.M. SPEC. A 48 CLASS 20

3.) Steel for hinge pins to be as per A.S.T.M. Designation A-7 or equivalent.

CITY OF WINDSOR	
DEPARTMENT OF PUBLIC WORKS	
'V' TYPE CATCH BASIN FRAME AND GRATE	
DR'N BY : K.A.J.	DATE : 4/16/71
REVISION JAN. 1976	CH'KD BY : <i>[Signature]</i>
CH'KD BY : <i>[Signature]</i>	PASSED BY : <i>[Signature]</i>
<i>[Signature]</i> COMMISSIONER OF WORKS	
AS-502	