

TYPE (B)  
TRANSVERSE CONTRACTION JOINT WITH LOAD TRANSFER DEVICE

**INSTALLATION NOTE:**

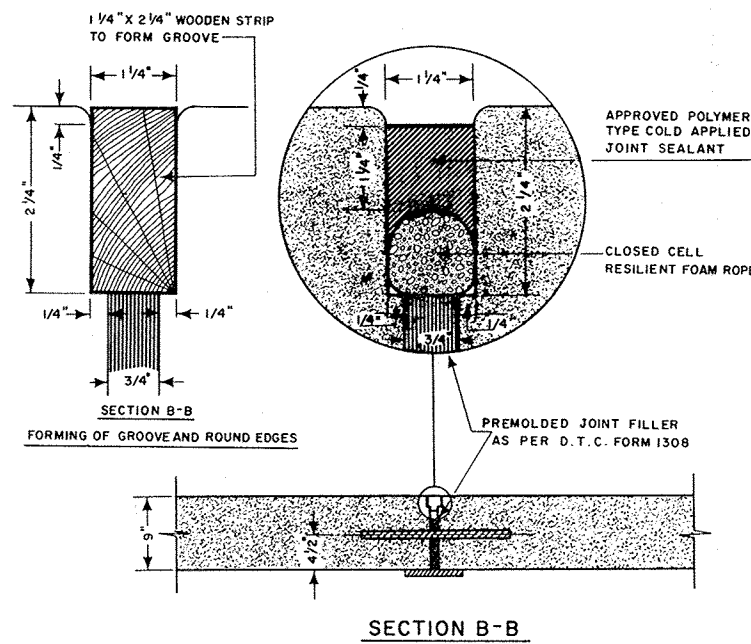
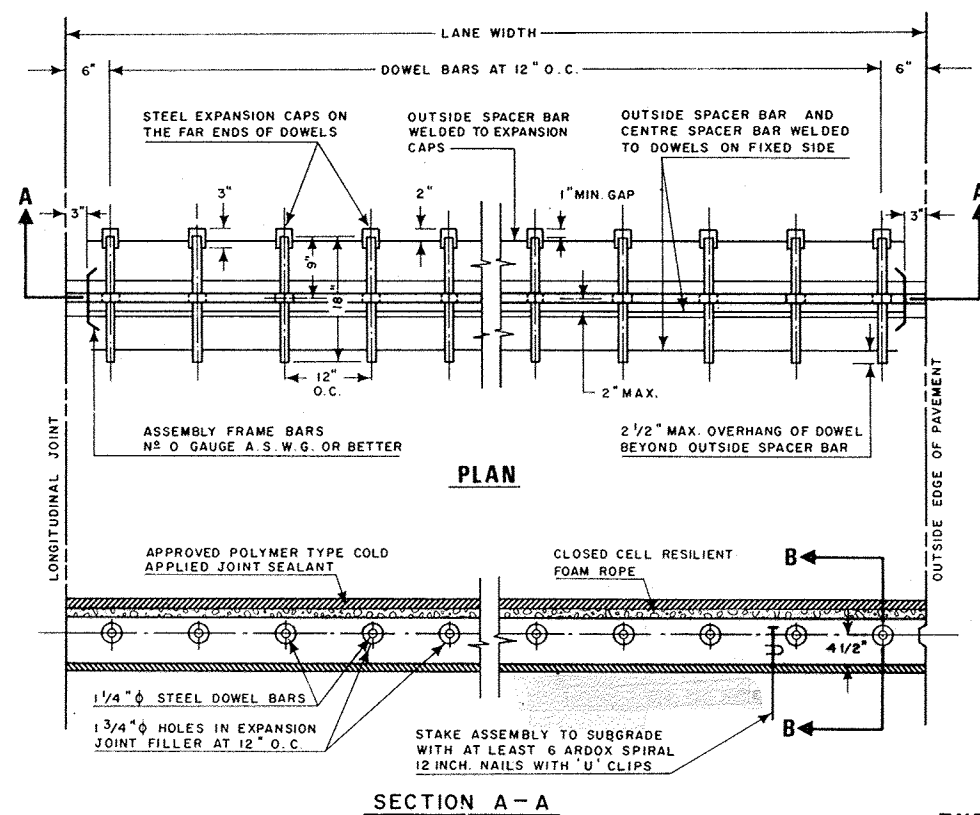
- ① DOWEL BARS GREASED AND LOAD TRANSFER DEVICE INSTALLED ON SUBGRADE.

**FORMING OF JOINT**

- ① COMPLETE JOINT BY SAWING DIRECTLY OVER CENTRE LINE OF DOWEL ASSEMBLY AS IN SECTION B-B FILLING IT WITH CLOSED-CELL RESILIENT FOAM ROPE, PRIMING THE SIDE FACES AND FILLING THE REMAINING PART OF THE CUT WITH APPROVED POLYMER TYPE COLD APPLIED JOINT SEALANT. SEAL TO BE CONTINUOUS BETWEEN LONGITUDINAL JOINTS.

**NOTES:**

- ① DOWEL ASSEMBLIES, CONFORMING TO M.T.C. FORM NO. 1307, TO BE SEPARABLE INTO TWO PARTS TO ALLOW THE GREASING OF THE BARS IN THE FIELD.
- ② DOWEL BARS AND ALL STEEL IN ASSEMBLIES TO CONFORM TO M.T.C. FORM 1304.
- ③ ASSEMBLY TO BE ADAPTABLE FOR EITHER CONTRACTION OR EXPANSION JOINT.
- ④ DOWEL ASSEMBLIES TO RECEIVE A COAT OF SPAR VARNISH, COAL TAR PAINT OR RED LEAD BY SUPPLIER.
- ⑤ CONSTRUCTION JOINT CAN BE FORMED BY USING EITHER EXPANSION OR CONTRACTION JOINT ASSEMBLIES AND SUITABLE BULKHEAD AS REQUIRED.
- ⑥ APPROVED POLYMER TYPE COLD APPLIED JOINT SEALANT COMPOUND TO CONFORM TO A.S.T.M. D1850-67.
- ⑦ ALL WORK TO CONFORM TO CITY OF WINDSOR STANDARD SPECIFICATION S-7.



TYPE (A)  
TRANSVERSE EXPANSION JOINT WITH LOAD TRANSFER DEVICE

**INSTALLATION NOTES:**

- ① ASSEMBLE LOAD TRANSFER DEVICE WITH EXPANSION JOINT FILLER, GREASE DOWEL BAR AND INSTALL THE ASSEMBLY ON GRANULAR BASE COURSE.
- ② PLACE WOODEN STRIP ON TOP OF EXPANSION JOINT FILLER AND FASTEN THE STRIP.

**FORMING OF JOINT**

- ① AFTER PASSAGE OF THE PAVER, WITHDRAW WOODEN STRIP, FORM THE GROOVE AND ROUND THE EDGES WITH HAND TOOLS.
- ② COMPLETE JOINT BY FILLING IT WITH CLOSED-CELL RESILIENT FOAM ROPE, PRIMING THE SIDE FACES AND FILLING THE REMAINING PART OF THE GROOVE WITH APPROVED POLYMER TYPE COLD APPLIED JOINT SEALANT.

**NOTES:**

- ① DOWEL BAR ASSEMBLIES, CONFORMING TO M.T.C. FORM NO. 1307, TO BE SEPARABLE INTO TWO PARTS TO ALLOW THE ADDITION OF THE EXPANSION JOINT FILLER AND THE GREASING OF THE PARTS IN THE FIELD.
- ② DOWEL BARS AND ALL STEEL IN ASSEMBLIES TO CONFORM TO M.T.C. FORM 1304.
- ③ EXPANSION JOINT FILLER, CONFORMING TO M.T.C. FORM 1308, TYPE A, TO BE ONE PIECE FOR A LANE.
- ④ ASSEMBLY TO BE ADAPTABLE FOR EITHER CONTRACTION OR EXPANSION JOINT.
- ⑤ DOWEL ASSEMBLIES TO RECEIVE A COAT OF SPAR VARNISH, COAL TAR PAINT OR RED LEAD BY SUPPLIER.
- ⑥ CONSTRUCTION JOINT CAN BE FORMED BY USING EITHER EXPANSION OR CONTRACTION JOINT ASSEMBLIES AND SUITABLE BULKHEAD AS REQUIRED.
- ⑦ APPROVED POLYMER TYPE COLD APPLIED JOINT SEALANT COMPOUND TO CONFORM TO A.S.T.M. D1850-67.
- ⑧ ALL WORK TO CONFORM TO CITY OF WINDSOR STANDARD SPECIFICATION S-7.

CITY OF WINDSOR  
DEPARTMENT OF PUBLIC WORKS

**DETAILS FOR LOAD TRANSFER DEVICE**

DRAWN BY	L. E. B.	DATE	MARCH 15/72
REVISION	JAN. 1976	CHECKED BY	R. M. L.
CHECKED BY	<i>[Signature]</i>	PASSED BY	H. G. P.

*[Signature]*  
COMMISSIONER OF WORKS

AS-212