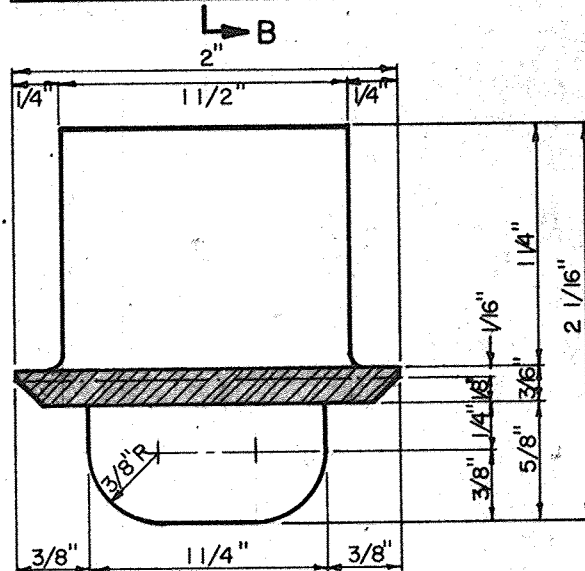
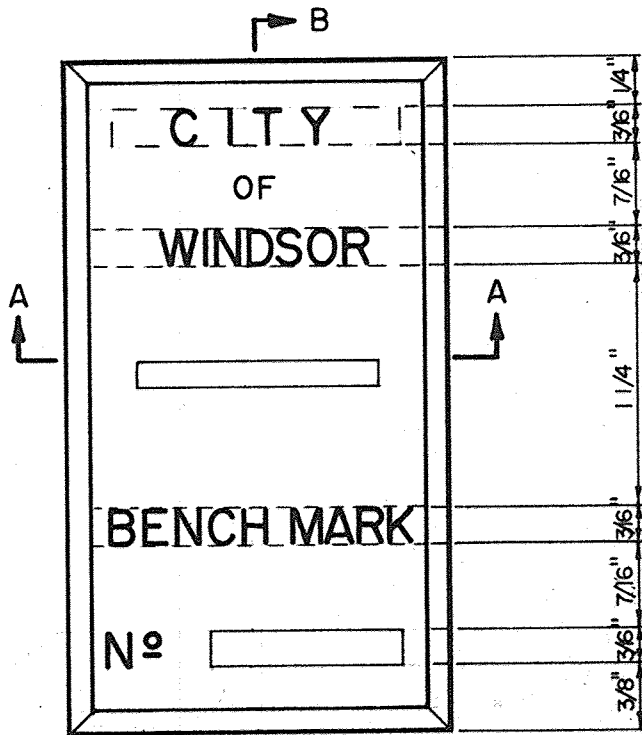


SECTION B-B



SECTION A-A

**NOTES:**

MATERIAL - CAST HARD BRONZE.  
 LETTERING TO BE RAISED.  
 PAD FOR B.M. N<sup>o</sup> TO BE GROUND  
 FLAT FOR HAND STAMP.  
 BEVEL EDGES AT 45°.

CITY OF WINDSOR DEPARTMENT OF PUBLIC WORKS	
BENCH MARK	
DR'N BY : K. A. J.	DATE: 4/22/71
REVISION : JAN. 1976	CH'KD BY: <i>[Signature]</i>
CH'KD BY: <i>[Signature]</i>	PASSED BY: <i>[Signature]</i>
<i>H. S. M.</i> COMMISSIONER OF WORKS	AS- 104