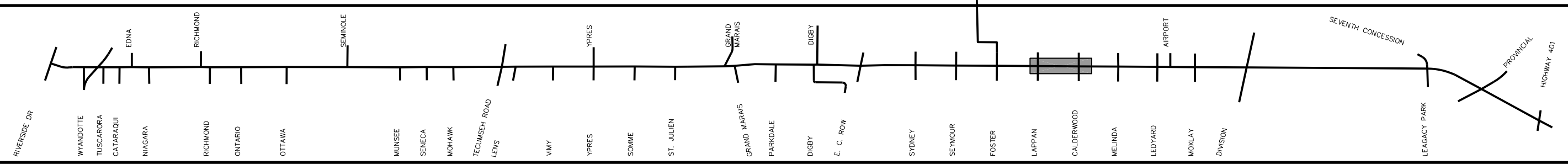
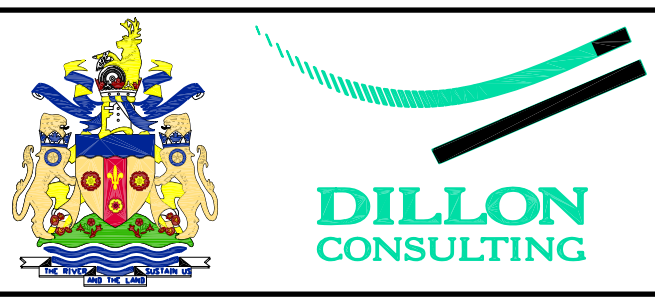
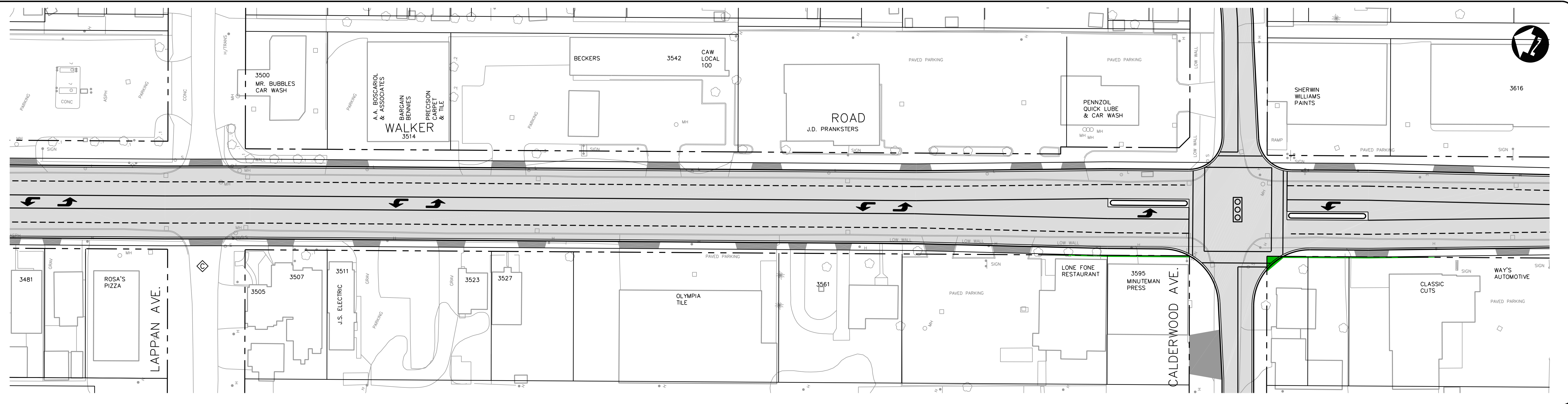


VIEW: SH26  
G:\CAD\996401\6401\_s-cent.dwg 03/17/2002 08:06:56 AM EST



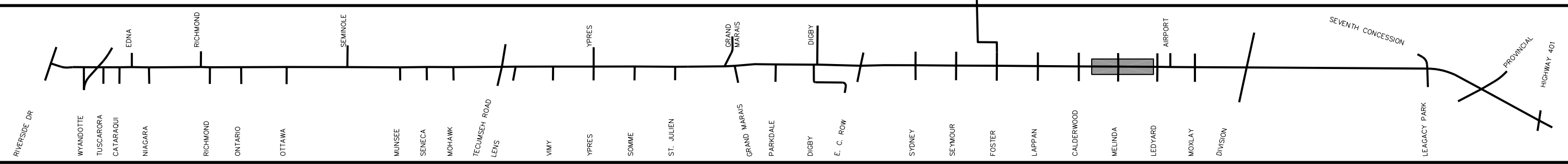
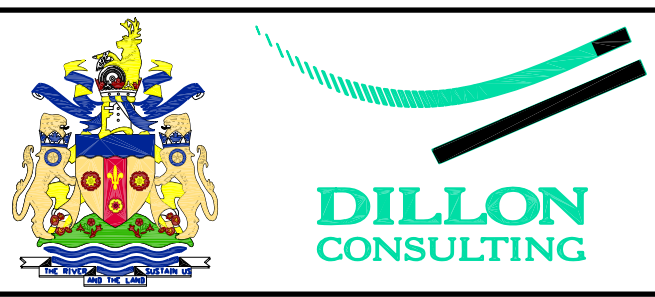
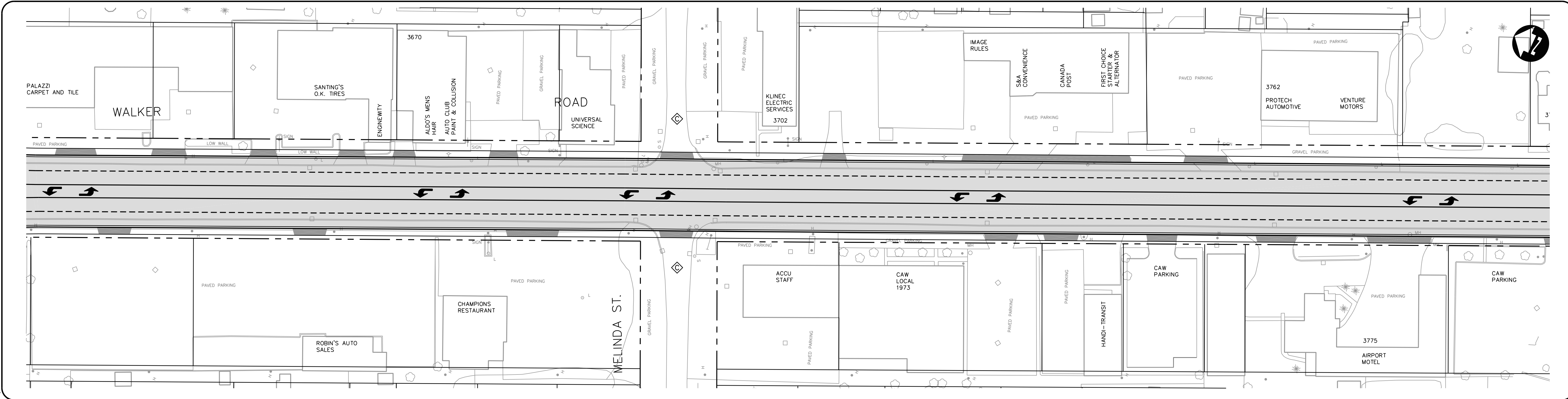
- LEGEND**
- NEW SIDEWALKS
  - NEW PAVEMENT
  - EASEMENT
  - PROPERTY ACQUISITION
  - CONCEPTUAL DRIVEWAY LOCATION

- ROAD CLOSURE (DETAILS TO BE DETERMINED)
- EXISTING TRAFFIC SIGNAL
- NEW TRAFFIC SIGNAL

**WALKER ROAD CORRIDOR  
GRAND MARAIS ROAD EAST IMPROVEMENTS  
ENVIRONMENTAL STUDY REPORT  
PREFERRED DESIGN**

SCALE: 1:500      MARCH, 2001      **FIGURE 26**

VIEW: SH27  
G:\CAD\996401\6401\_sen1.dwg 03/17/2002 08:06:56 AM EST



- NEW SIDEWALKS
- NEW PAVEMENT
- EASEMENT
- PROPERTY ACQUISITION
- CONCEPTUAL DRIVEWAY LOCATION

**LEGEND**

- ROAD CLOSURE  
(DETAILS TO BE DETERMINED)
- EXISTING TRAFFIC SIGNAL
- NEW TRAFFIC SIGNAL

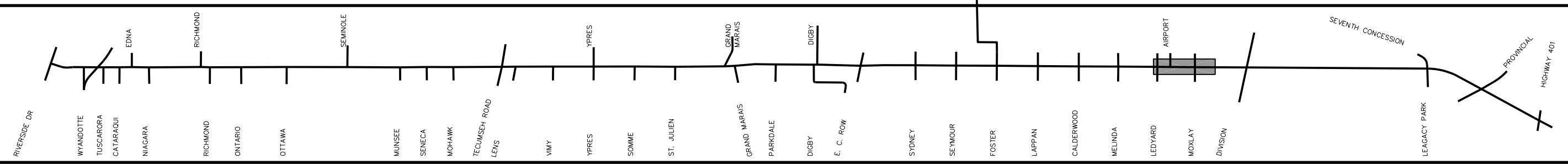
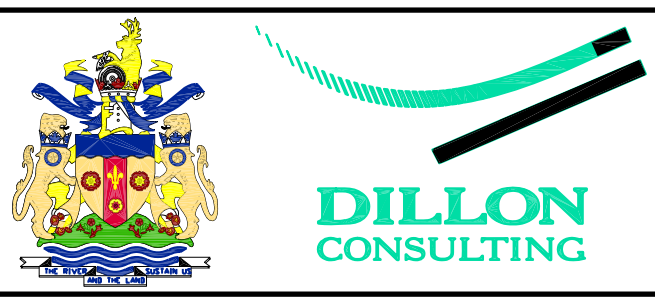
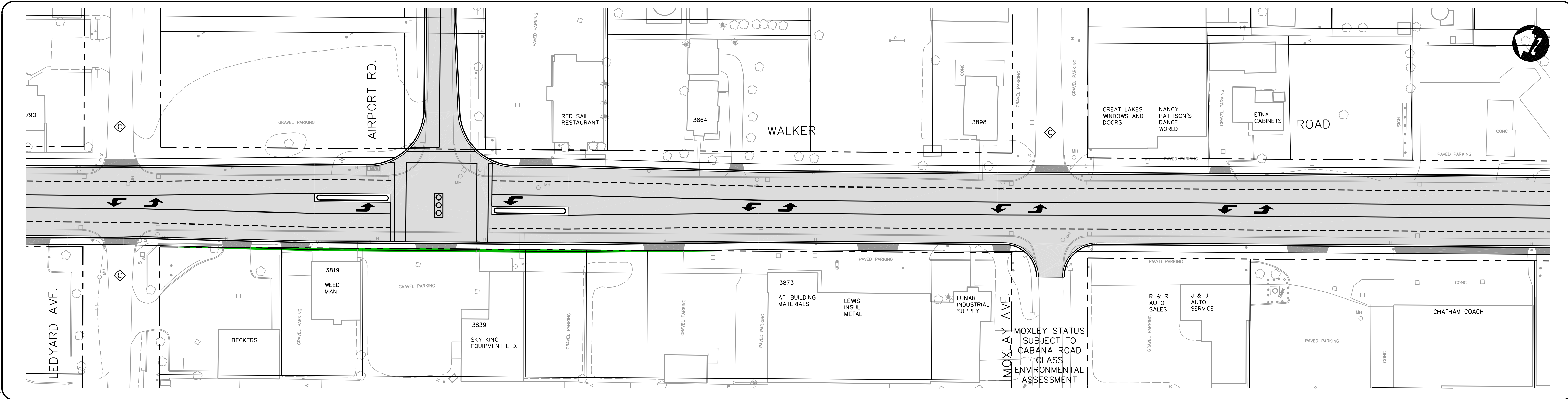
SCALE: 1500

MARCH, 2001

FIGURE 27

**WALKER ROAD CORRIDOR  
GRAND MARAIS ROAD EAST IMPROVEMENTS  
ENVIRONMENTAL STUDY REPORT  
PREFERRED DESIGN**

VIEW: SH28  
 G:\CAD\996401\6401s-cent.dwg 03/17/2002 08:06:56 AM EST



- NEW SIDEWALKS
- NEW PAVEMENT
- EASEMENT
- PROPERTY ACQUISITION
- CONCEPTUAL DRIVEWAY LOCATION

**LEGEND**

- ROAD CLOSURE  
(DETAILS TO BE DETERMINED)
- EXISTING TRAFFIC SIGNAL
- NEW TRAFFIC SIGNAL

SCALE: 1500

MARCH, 2001

FIGURE 28

**WALKER ROAD CORRIDOR  
 GRAND MARAIS ROAD EAST IMPROVEMENTS  
 ENVIRONMENTAL STUDY REPORT  
 PREFERRED DESIGN**