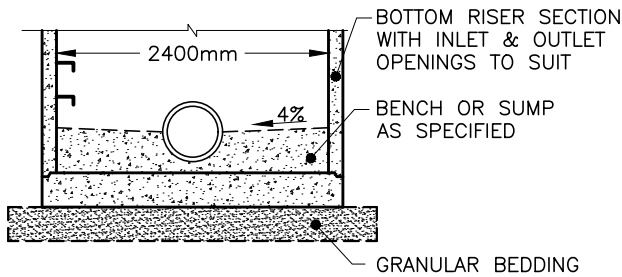
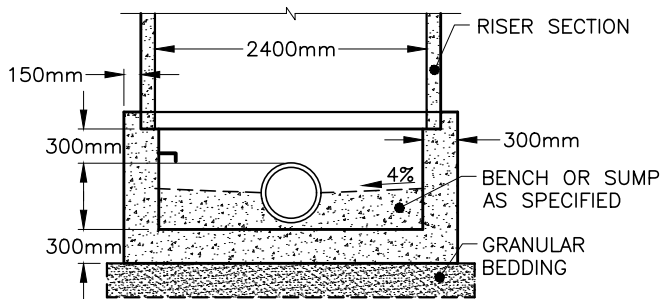


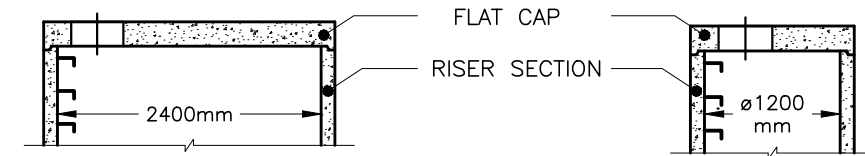
## ALTERNATIVES



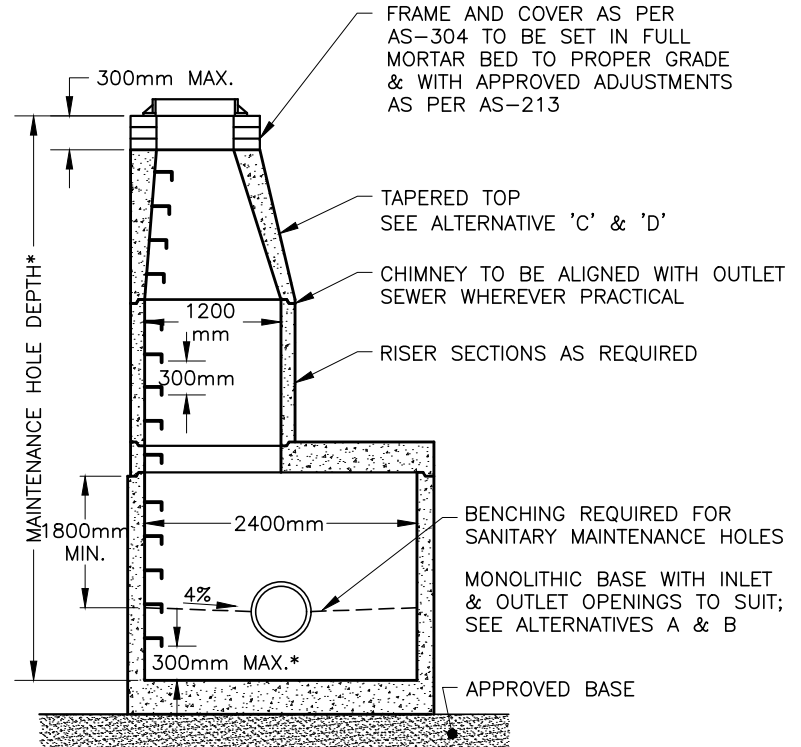
### A. PRECAST SLAB BASE



### B. CAST-IN-PLACE BASE



### C. 2400mm PRECAST FLAT CAP





\*MEASURED TO BENCHING OR SUMP, WHICHEVER IS APPLICABLE

### D. 1200mm PRECAST FLAT CAP

#### NOTES:

- THE SUMP IS MEASURED FROM THE LOWEST INVERT, FOR SUMP DETAIL SEE AS-314A.
- GRANULAR 'A' BACKFILL SHALL BE PLACED AND COMPACTED IN LIFTS NOT EXCEEDING 300mm TO A MINIMUM WIDTH OF 300mm AROUND THE ENTIRE PERIMETER OF THE MAINTENANCE HOLE.
- PRECAST CONCRETE COMPONENTS SHALL BE ACCORDING TO OPSD 701 & 703 SERIES.
- SANITARY MAINTENANCE HOLES SHALL HAVE GASKETED FLEXIBLE WATERTIGHT CONNECTIONS FOR ALL INLET AND OUTLET PIPES, UNLESS OTHERWISE APPROVED BY THE CITY ENGINEER.
  - STORM INLET AND OUTLET SUPPORT SHALL BE CLASS 'A' BEDDING TO FIRST PIPE JOINT BEYOND MANHOLE (RIGID PIPE) OR HAVE A FLEXIBLE JOINT WITHIN 900mm OF MAINTENANCE HOLE WALL (RIGID OR FLEXIBLE PIPE) WITH CLEAR STONE BEDDING.
- MAINTENANCE HOLE STEPS IN ACCORDANCE WITH AS-305.
- FROST STRAPPING FOR SANITARY MAINTENANCE HOLES AS PER AS-314 TO EXTEND 2.0m BELOW FINISHED GRADE (1.0m BELOW FROST DEPTH).
- WATERPROOFING MEMBRANE FOR SANITARY MAINTENANCE HOLES AS PER AS-314, SHALL BE INSTALLED PRIOR TO INSTALLATION OF FROST STRAPPING.
- STRUCTURES EXCEEDING 5.0m IN DEPTH SHALL INCLUDE SAFETY PLATFORM ACCORDING TO APPLICABLE OPSD, UNLESS OTHERWISE DIRECTED BY THE CITY ENGINEER.

NOT TO SCALE

 <b>CITY OF WINDSOR</b> ENGINEERING DEPARTMENT	
<b>PRECAST MAINTENANCE HOLE 2400mm DIAMETER</b>	
DR'N BY: SS, NB, AZ	DATE: MAR, 2017
REV. DATE: MAR, 2025	CH'KD BY (ENG): PM, SC
CH'KD BY (GEQ/OPS): PJU, AL	PASSED BY: FM
 CITY ENGINEER	
<b>AS-314D</b>	