

SANDWICH SOUTH
MASTER SERVICING PLAN

LEGEND

- Sandwich South Project Boundary
- Existing Employment
- Commercial Centre
- County Road 42 Secondary Plan Area
- Existing Residential
- SWM Corridor
- East Pelton Secondary Plan Area
- Private Recreation
- Airport Solar Farm
- Low Density Residential
- Minor Institutional
- Future Employment
- Medium Density Residential
- Mixed Use
- Future Urban
- Business Park Type I
- Natural Heritage
- Proposed Collector/Arterial Roads
- Business Park Type II
- Neighbourhood Commercial
- Major Institutional
- Open Space/Park

**SANDWICH SOUTH
PROJECT LOCATION
PROPOSED LAND USE**

FIGURE 1



MAP DRAWING INFORMATION:
DATA PROVIDED BY CITY OF WINDSOR 2019, MNRF 2019, TOWN OF
TECUMSEH 2019, *ESSEX REGION CONSERVATION AUTHORITY 2019,
**COUNTY OF ESSEX 2019

MAP CREATED BY:
MAP CHECKED BY:
MAP COORDINATE SYSTEM: NAD 1983 CSRS UTM Zone 17N

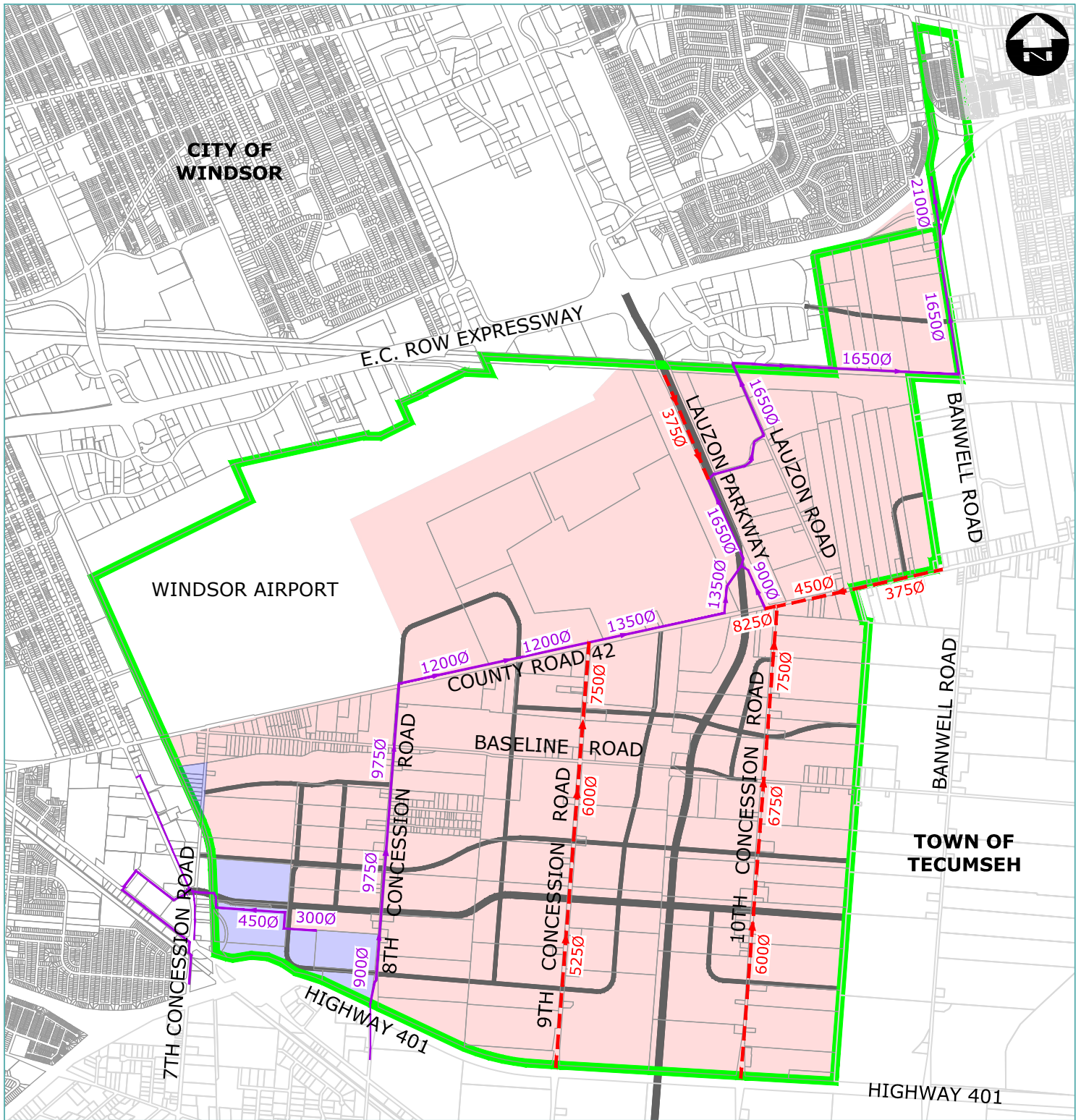
*DEM - CGVD28:78 DEM SURFACE DERIVED BY ERCA BASED ON MNRF LIDAR - DIGITAL TERRAIN
MODEL (2016-18). COPYRIGHT ERCA, 2019. CONTAINS INFORMATION LICENSED UNDER THE OPEN
GOVERNMENT LICENCE - ONTARIO.
(WWW.ONTARIO.CA/PAGE/OPEN-GOVERNMENT-LICENCE-ONTARIO)

**2019 IMAGERY - THE DIGITAL MAP LAYERS HAVE BEEN USED WITH EXPRESS PERMISSION OF
THE CORPORATION OF THE COUNTY OF ESSEX



STATUS: DRAFT
PROJECT: 19-9817

DATE: September 02, 2021



**SANDWICH SOUTH
MASTER SERVICING PLAN**

LEGEND

- STUDY AREA
- SANDWICH SOUTH SANITARY DRAINAGE AREA
- LOU ROMANO WATER RECLAMATION PLANT DRAINAGE AREA
- PROPOSED INTERNAL ROAD NETWORK
- EXISTING SANITARY TRUNK SEWERS
- PROPOSED SANITARY TRUNK SEWERS

PROPOSED INTERNAL ROAD NETWORK

EXISTING SANITARY TRUNK SEWERS

PROPOSED SANITARY TRUNK SEWERS

DRAFT
PROPOSED SANITARY TRUNK SEWERS LAYOUT
FIGURE 2

THE CITY OF WINDSOR
ONTARIO, CANADA

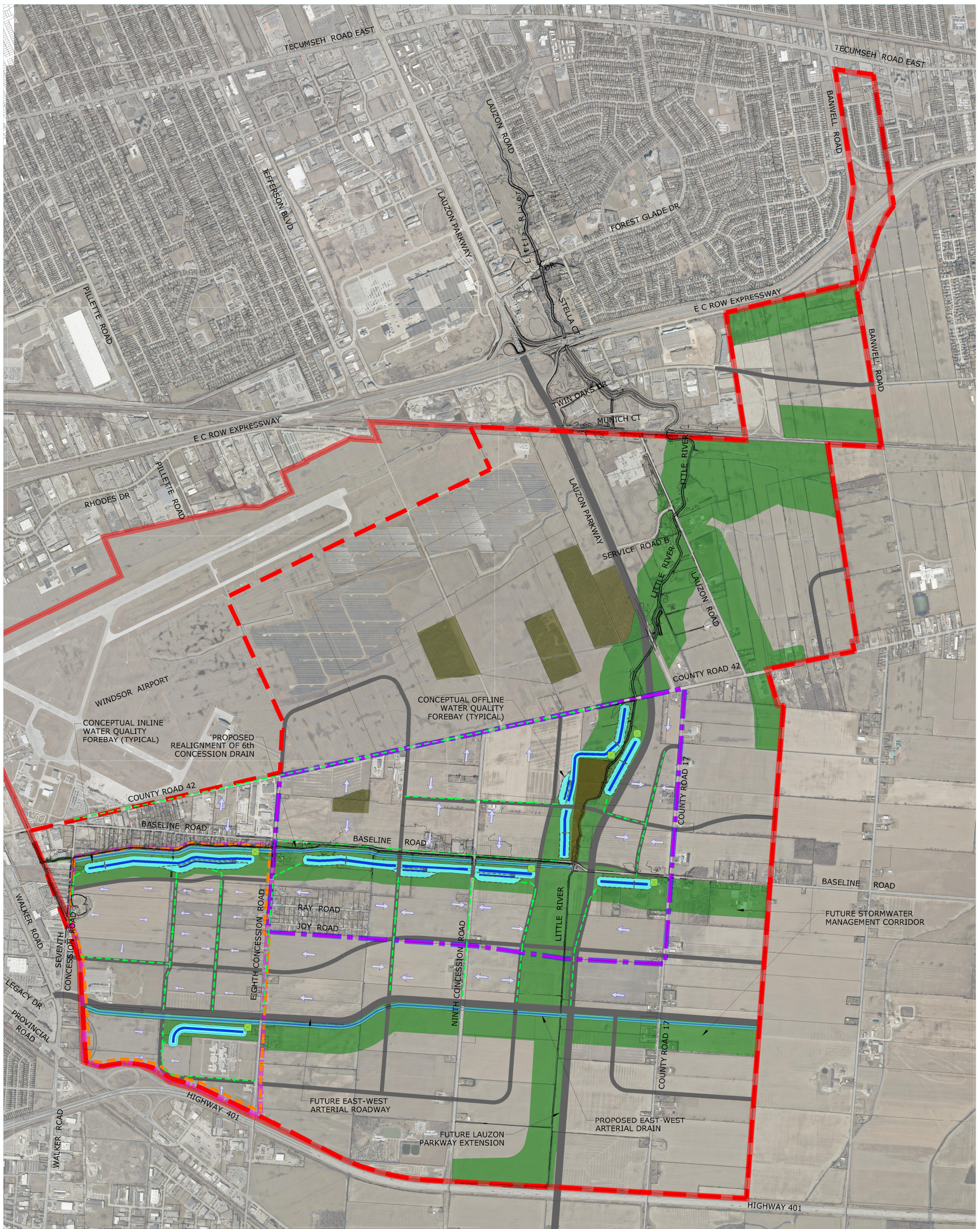
MAP DRAWING INFORMATION:
DATA PROVIDED BY CITY OF WINDSOR 2019, MNR 2019, TOWN OF TECUMSEH 2019, *ESSEX REGION CONSERVATION AUTHORITY 2019, **COUNTY OF ESSEX 2019

MAP CREATED BY:
MAP CHECKED BY:
MAP COORDINATE SYSTEM: NAD 1983 CSRS UTM Zone 17N







*DEM - CGV028-78 DEM SURFACE DERIVED BY ERCA BASED ON MNR/LIDAR - DIGITAL TERRAIN MODEL (2016-18), COPYRIGHT ERCA, 2019. CONTAINS INFORMATION LICENSED UNDER THE OPEN GOVERNMENT LICENCE - ONTARIO. (WWW.ONTARIO.CA/PAGE/OPEN-GOVERNMENT-LICENCE-ONTARIO)


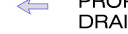




**2019 IMAGERY - THE DIGITAL MAP LAYERS HAVE BEEN USED WITH EXPRESS PERMISSION OF THE CORPORATION OF THE COUNTY OF ESSEX

STATUS: DRAFT
PROJECT: 19-9817
DATE: September 02, 2021



SANDWICH SOUTH MASTER SERVICING PLAN

-  STUDY AREA
-  EAST PELTON SPA
-  CR42 SPA
-  TRUNK STORM SEWER
-  FUTURE COLLECTOR AND ARTERIAL ROADS
-  OPEN SPACE / STORMWATER MANAGEMENT CORRIDOR

-  OPEN SPACE / STORMWATER MANAGEMENT CORRIDOR
-  PROPOSED STORM SEWER DRAINAGE ARROW
-  STORMWATER PUMP STATION
-  STORMWATER PERMANENT POOL
-  STORMWATER MANAGEMENT POND - ACTIVE STORAGE
-  MUNICIPAL DRAIN RELOCATION OR NEW DRAIN

- NOTE**
1. THE STORMWATER CORRIDORS WILL ACCOMMODATE THE MUNICIPAL DRAIN REALIGNMENTS, RECREATIONAL TRAILS, PONDS, PUMP STATIONS AND PROPOSED NATURAL HERITAGE AREAS.
 2. LAYOUT OF THE PONDS AND OTHER FEATURES WILL BE REFINED BASED ON FINAL NATURAL HERITAGE SYSTEM RECOMMENDATIONS AND REFINED FUNCTIONAL DESIGNS.
 3. FINAL POND/FOREBAY SIZE AND LOCATIONS TO BE FURTHER REFINED THROUGH DETAILED DESIGN.

DRAFT
STORMWATER
MANAGEMENT
STRATEGY

FIGURE 3

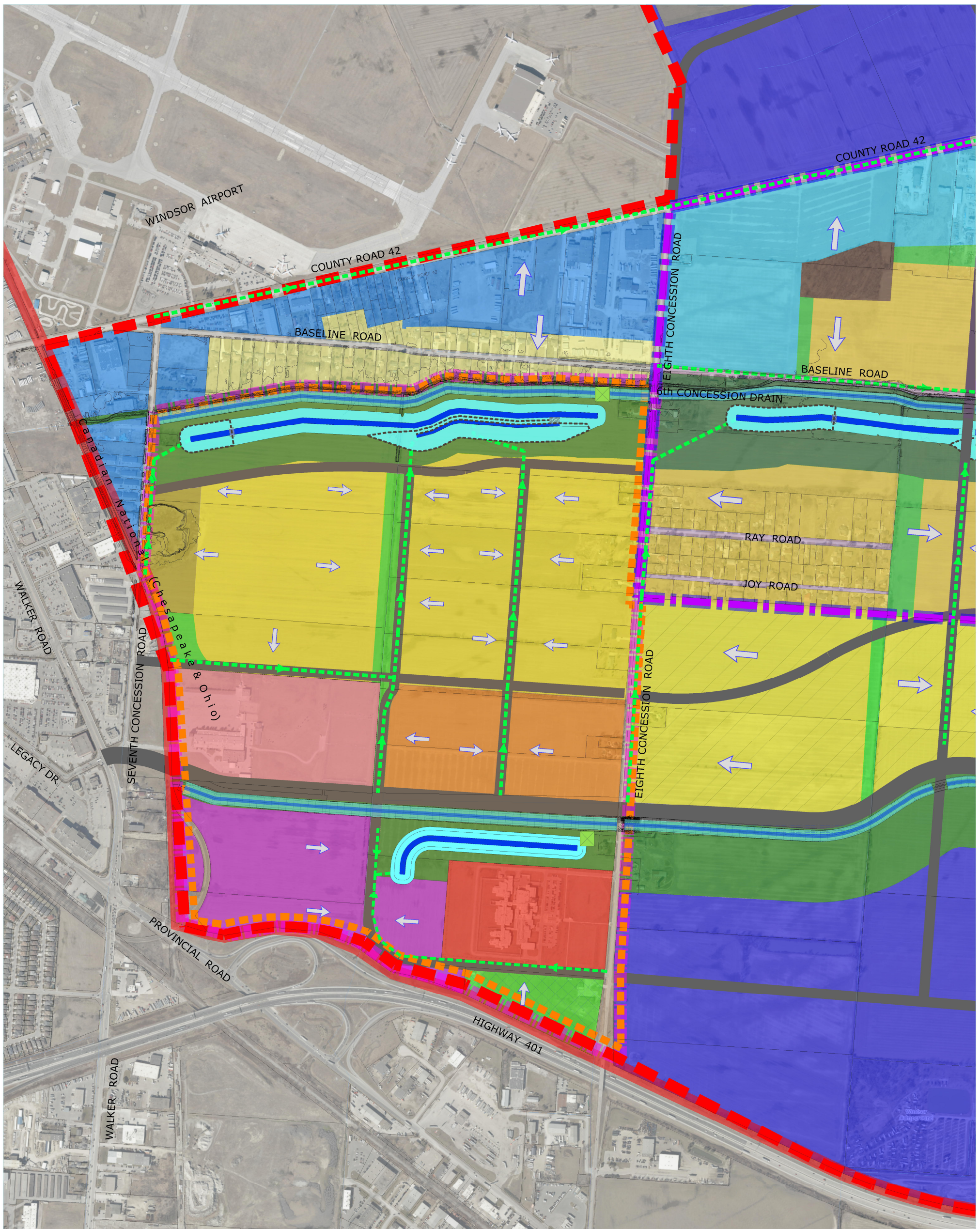


MAP DRAWING INFORMATION:
DATA PROVIDED BY CITY OF WINDSOR 2019, MNR 2019, TOWN OF TECUMSEH 2019, *ESSEX REGION CONSERVATION AUTHORITY 2019, **COUNTY OF ESSEX 2019
MAP CREATED BY:
MAP CHECKED BY:
MAP COORDINATE SYSTEM: NAD 1983 CSRS UTM Zone 17N
*DEM - CGVD28-78 DEM SURFACE DERIVED BY ERCA BASED ON MNR LIDAR - DIGITAL TERRAIN MODEL (2016-18). COPYRIGHT ERCA, 2019. CONTAINS INFORMATION LICENSED UNDER THE OPEN GOVERNMENT LICENCE - ONTARIO. (WWW.ONTARIO.CA/PAGE/OPEN-GOVERNMENT-LICENCE-ONTARIO)
**2019 IMAGERY - THE DIGITAL MAP LAYERS HAVE BEEN USED WITH EXPRESS PERMISSION OF THE CORPORATION OF THE COUNTY OF ESSEX

SCALE: 1:12500
STATUS: DRAFT
PROJECT: 19-9817



DATE: September 01, 2021



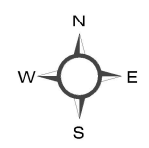
SANDWICH SOUTH MASTER SERVICING PLAN

- STUDY AREA
- EAST PELTON SPA
- CR42 SPA
- TRUNK STORM SEWER
- FUTURE COLLECTOR AND ARTERIAL ROADS
- OPEN SPACE / STORMWATER MANAGEMENT CORRIDOR
- PROPOSED STORM SEWER DRAINAGE ARROW
- STORMWATER PUMP STATION
- STORMWATER PERMANENT POOL
- STORMWATER MANAGEMENT POND - ACTIVE STORAGE
- MUNICIPAL DRAIN RELOCATION OR NEW DRAIN

- LEGEND**
- Sandwich South Project Boundary
 - County Road 42 Secondary Plan Area
 - East Pelton Secondary Plan Area
 - Low Density Residential
 - Medium Density Residential
 - Business Park Type I
 - Business Park Type II
 - Major Institutional Existing Employment
 - Existing Residential
 - Private Recreation
 - Minor Institutional
 - Mixed Use
 - Natural Heritage
 - Neighbourhood Commercial
 - Open Space/Park Commercial Centre
 - SWM Corridor
 - Airport Solar Farm
 - Future Employment
 - Future Urban
 - Proposed Collector/ Arterial Roads



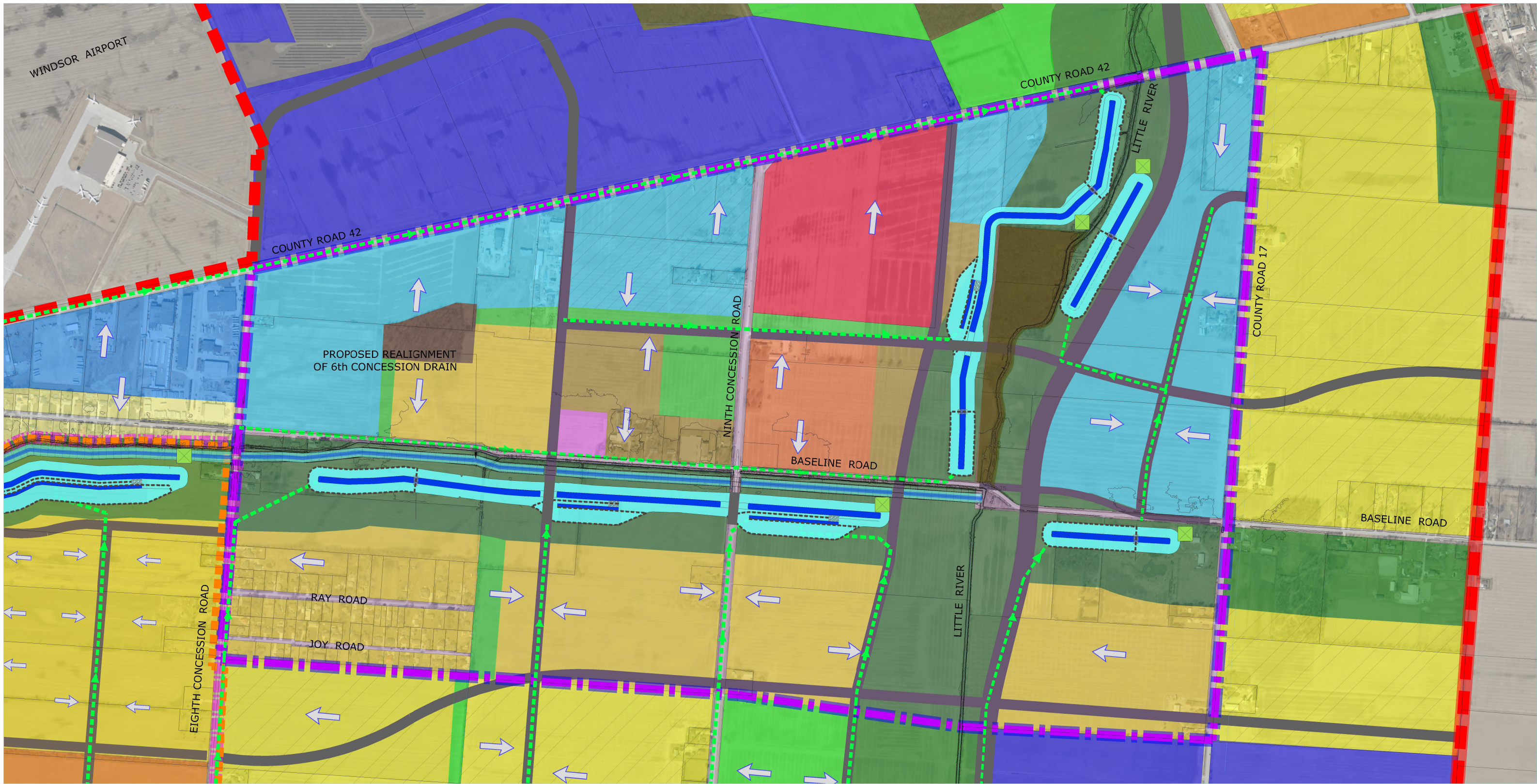
MAP DRAWING INFORMATION:
 DATA PROVIDED BY CITY OF WINDSOR 2019, MNR 2019, TOWN OF TECUMSEH 2019, *ESSEX REGION CONSERVATION AUTHORITY 2019, **COUNTY OF ESSEX 2019
 MAP CREATED BY:
 MAP CHECKED BY:
 MAP COORDINATE SYSTEM: NAD 1983 CSRS UTM Zone 17N
 *DEM - CGVD28; 78 DEM SURFACE DERIVED BY ERCA BASED ON MNR LIDAR - DIGITAL TERRAIN MODEL (2016-18). COPYRIGHT ERCA, 2019. CONTAINS INFORMATION LICENSED UNDER THE OPEN GOVERNMENT LICENCE - ONTARIO. (WWW.ONTARIO.CA/PAGE/OPEN-GOVERNMENT-LICENCE-ONTARIO)
 **2019 IMAGERY - THE DIGITAL MAP LAYERS HAVE BEEN USED WITH EXPRESS PERMISSION OF THE CORPORATION OF THE COUNTY OF ESSEX



DRAFT
STORMWATER
MANAGEMENT
STRATEGY
EAST PELTON SPA

FIGURE 4

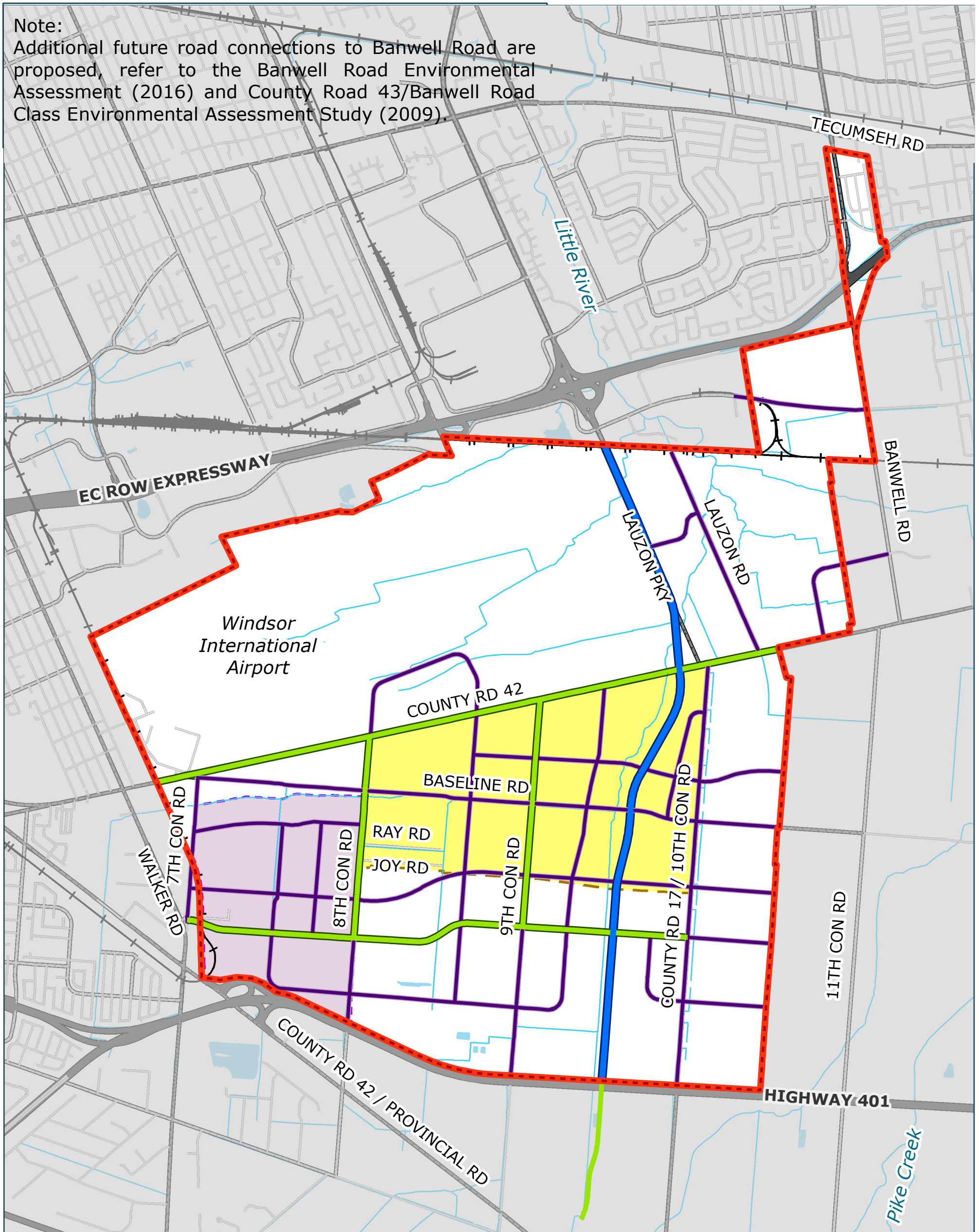
SCALE: 1:5000
 STATUS: DRAFT
 PROJECT: 19-9817
 DATE: September 01, 2021



SANDWICH SOUTH MASTER SERVICING PLAN
DRAFT
STORMWATER
MANAGEMENT STRATEGY
CR42 SPA
FIGURE 5

<p> STUDY AREA</p> <p> EAST PELTON SPA</p> <p> CR42 SPA</p> <p> TRUNK STORM SEWER</p>	<p> FUTURE COLLECTOR AND ARTERIAL ROADS</p> <p> OPEN SPACE / STORMWATER MANAGEMENT CORRIDOR</p> <p> OPEN SPACE / STORMWATER MANAGEMENT CORRIDOR</p> <p> PROPOSED STORM SEWER DRAINAGE ARROW</p>	<p> STORMWATER PUMP STATION</p> <p> STORMWATER PERMANENT POOL</p> <p> STORMWATER MANAGEMENT POND - ACTIVE STORAGE</p> <p> MUNICIPAL DRAIN RELOCATION OR NEW DRAIN</p>	<p>LEGEND</p> <p> Sandwich South Project Boundary</p> <p> County Road 42 Secondary Plan Area</p> <p> East Pelton Secondary Plan Area</p> <p> Low Density Residential</p> <p> Medium Density Residential</p> <p> Business Park Type I</p> <p> Business Park Type II</p>	<p> Major Institutional</p> <p> Existing Employment</p> <p> Existing Residential</p> <p> Private Recreation</p> <p> Minor Institutional</p> <p> Mixed Use</p> <p> Natural Heritage</p> <p> Neighbourhood Commercial</p>	<p> Open Space/Park</p> <p> Commercial Centre</p> <p> SWM Corridor</p> <p> Airport Solar Farm</p> <p> Future Employment</p> <p> Future Urban</p> <p> Proposed Collector/ Arterial Roads</p>
<p> THE CITY OF WINDSOR ONTARIO, CANADA</p>		<p> DILLON CONSULTING</p>	<p>MAP DRAWING INFORMATION: DATA PROVIDED BY CITY OF WINDSOR 2019, MNRF 2019, TOWN OF TECUMSEH 2019, *ESSEX REGION CONSERVATION AUTHORITY 2019,**COUNTY OF ESSEX</p> <p>MAP CREATED BY: MAP CHECKED BY: MAP COORDINATE SYSTEM: NAD 1983 CSRS UTM Zone 17N</p> <p>*DEM - CGVD28-78 DEM SURFACE DERIVED BY ERCA BASED ON MNRF LIDAR - DIGITAL TERRAIN MODEL (2016-18). COPYRIGHT ERCA, 2019. CONTAINS INFORMATION LICENSED UNDER THE OPEN GOVERNMENT LICENCE - ONTARIO. (WWW.ONTARIO.CA/PAGE/OPEN-GOVERNMENT-LICENCE-ONTARIO) **2019 IMAGERY - THE DIGITAL MAP LAYERS HAVE BEEN USED WITH EXPRESS PERMISSION OF THE CORPORATION OF THE COUNTY OF ESSEX</p>		<p></p> <p>STATUS: DRAFT SCALE: 1:5000 PROJECT: 19-9817 DATE: September 01, 2021</p> <p>File Location: c:\pw working directory\projects 219\32rbh\dms90713\199817-02-swm-ponds.dwg September, 01, 2021 4:49 PM</p>

Note:
 Additional future road connections to Bahwell Road are proposed, refer to the Bahwell Road Environmental Assessment (2016) and County Road 43/Bahwell Road Class Environmental Assessment Study (2009).



SANDWICH SOUTH
 MASTER SERVICING PLAN

- Sandwich South Study Area
- County Road 42 Secondary Plan Area
- East Pelton Secondary Plan Area
- Six-Lane Urban Roadway
- Four-Lane Urban Roadway
- Two-Lane Urban Roadway
- Railway
- Municipal Drain / Watercourse
- Waterbody

DRAFT

ULTIMATE ROAD NETWORK

FIGURE 6



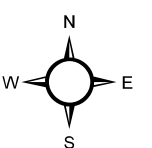
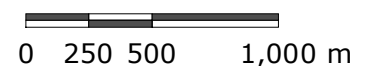
MAP DRAWING INFORMATION:
 DATA PROVIDED BY CITY OF WINDSOR 2019, MNRF 2019, TOWN OF TECUMSEH 2019, *ESSEX REGION CONSERVATION AUTHORITY 2019, **COUNTY OF ESSEX 2019

MAP CREATED BY: LK
 MAP CHECKED BY: LH
 MAP COORDINATE SYSTEM: NAD 1983 CSRS UTM Zone 17N

*DEM - CGVD28:78 DEM SURFACE DERIVED BY ERCA BASED ON MNRF LIDAR - DIGITAL TERRAIN MODEL (2016-18). COPYRIGHT ERCA, 2019. CONTAINS INFORMATION LICENSED UNDER THE OPEN GOVERNMENT LICENCE - ONTARIO.
 (WWW.ONTARIO.CA/PAGE/OPEN-GOVERNMENT-LICENCE-ONTARIO)

**2019 IMAGERY - THE DIGITAL MAP LAYERS HAVE BEEN USED WITH THE EXPRESS PERMISSION OF THE CORPORATION OF THE COUNTY OF ESSEX

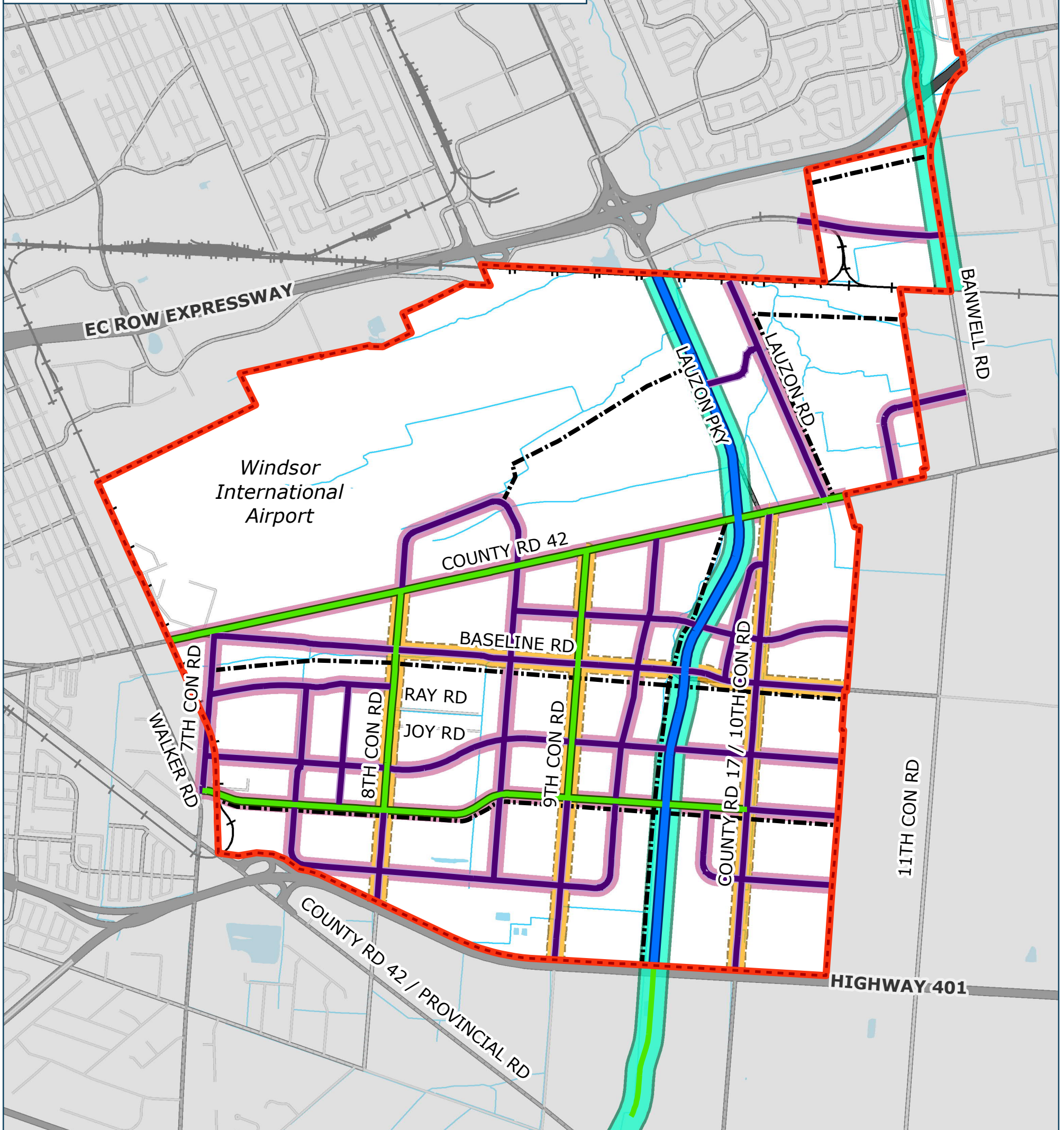
SCALE 1:30,000



STATUS: DRAFT
 PROJECT: 19-9817

DATE: 2021-09-01

Note:
 All active transportation facilities shall meet current Ontario Traffic Manual requirements, the future City's Complete Streets policy, and be designed as a 'AAA Facilities' that are safe and conformable for All Ages and Abilities. Recreational Trails will not intersect existing Natural Heritage areas.



SANDWICH SOUTH
 MASTER SERVICING PLAN

- Sandwich South Study Area
- Six-Lane Urban Roadway
- Four-Lane Urban Roadway
- Two-Lane Urban Roadway
- Multi-Use Pathway
- Cycle Track
- Protected Bike Lane
- Recreational Trail
- Railway
- Municipal Drain / Watercourse
- Waterbody

DRAFT

**ACTIVE
 TRANSPORTATION
 NETWORK**

FIGURE 7



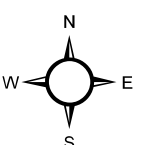
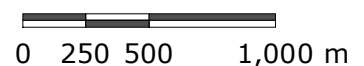
MAP DRAWING INFORMATION:
 DATA PROVIDED BY CITY OF WINDSOR 2019, MNRF 2019, TOWN OF TECUMSEH 2019, *ESSEX REGION CONSERVATION AUTHORITY 2019, **COUNTY OF ESSEX 2019

MAP CREATED BY: LK
 MAP CHECKED BY: LH
 MAP COORDINATE SYSTEM: NAD 1983 CSRS UTM Zone 17N

*DEM - CGVD28:78 DEM SURFACE DERIVED BY ERCA BASED ON MNRF LIDAR - DIGITAL TERRAIN MODEL (2016-18). COPYRIGHT ERCA, 2019. CONTAINS INFORMATION LICENSED UNDER THE OPEN GOVERNMENT LICENCE - ONTARIO.
 (WWW.ONTARIO.CA/PAGE/OPEN-GOVERNMENT-LICENCE-ONTARIO)

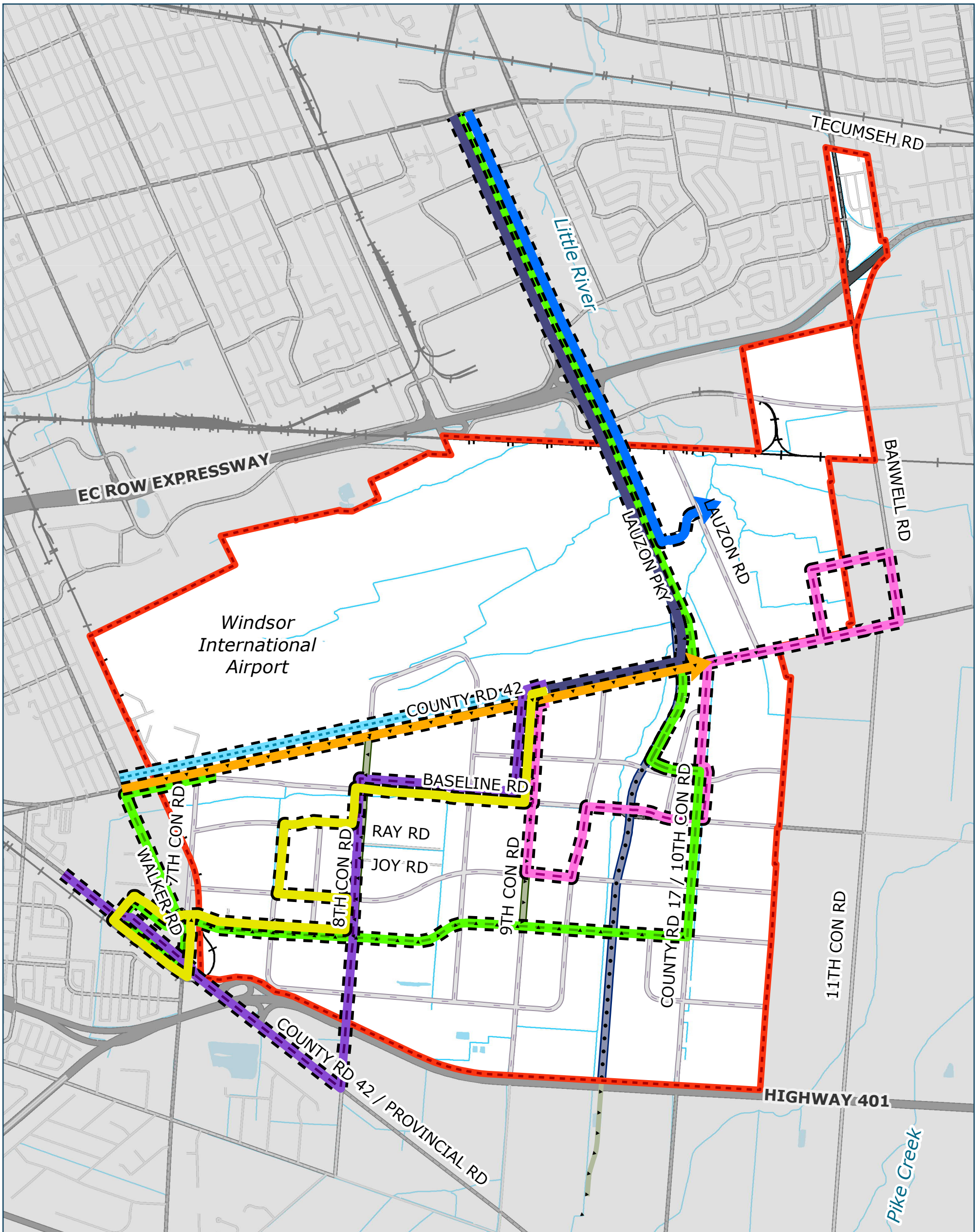
**2019 IMAGERY - THE DIGITAL MAP LAYERS HAVE BEEN USED WITH THE EXPRESS PERMISSION OF THE CORPORATION OF THE COUNTY OF ESSEX

SCALE 1:30,000



STATUS: DRAFT
 PROJECT: 19-9817

DATE: 2021-09-01



SANDWICH SOUTH
MASTER SERVICING PLAN

DRAFT

CONCEPTUAL TRANSIT NETWORK

FIGURE 8

- Sandwich South Study Area
- Six-Lane Urban Roadway
- Four-Lane Urban Roadway
- Two-Lane Urban Roadway
- Railway
- Municipal Drain / Watercourse

- Waterbody
- Conceptual Route Network**
- Route 160
- Route 15
- Route 16
- Route 200

- Local 1
- Local 2
- Local 3
- Local 4



MAP DRAWING INFORMATION:
DATA PROVIDED BY CITY OF WINDSOR 2019, MNRF 2019, TOWN OF TECUMSEH 2019, *ESSEX REGION CONSERVATION AUTHORITY 2019, **COUNTY OF ESSEX 2019

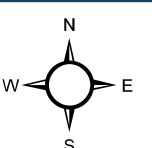
MAP CREATED BY: LK
MAP CHECKED BY: AB
MAP COORDINATE SYSTEM: NAD 1983 CSRS UTM Zone 17N

*DEM - CGVD28:78 DEM SURFACE DERIVED BY ERCA BASED ON MNRF LIDAR - DIGITAL TERRAIN MODEL (2016-18). COPYRIGHT ERCA, 2019. CONTAINS INFORMATION LICENSED UNDER THE OPEN GOVERNMENT LICENCE - ONTARIO. (WWW.ONTARIO.CA/PAGE/OPEN-GOVERNMENT-LICENCE-ONTARIO)

**2019 IMAGERY - THE DIGITAL MAP LAYERS HAVE BEEN USED WITH THE EXPRESS PERMISSION OF THE CORPORATION OF THE COUNTY OF ESSEX

SCALE 1:30,000

0 250 500 1,000 m



STATUS: DRAFT
PROJECT: 19-9817

DATE: 2021-09-01