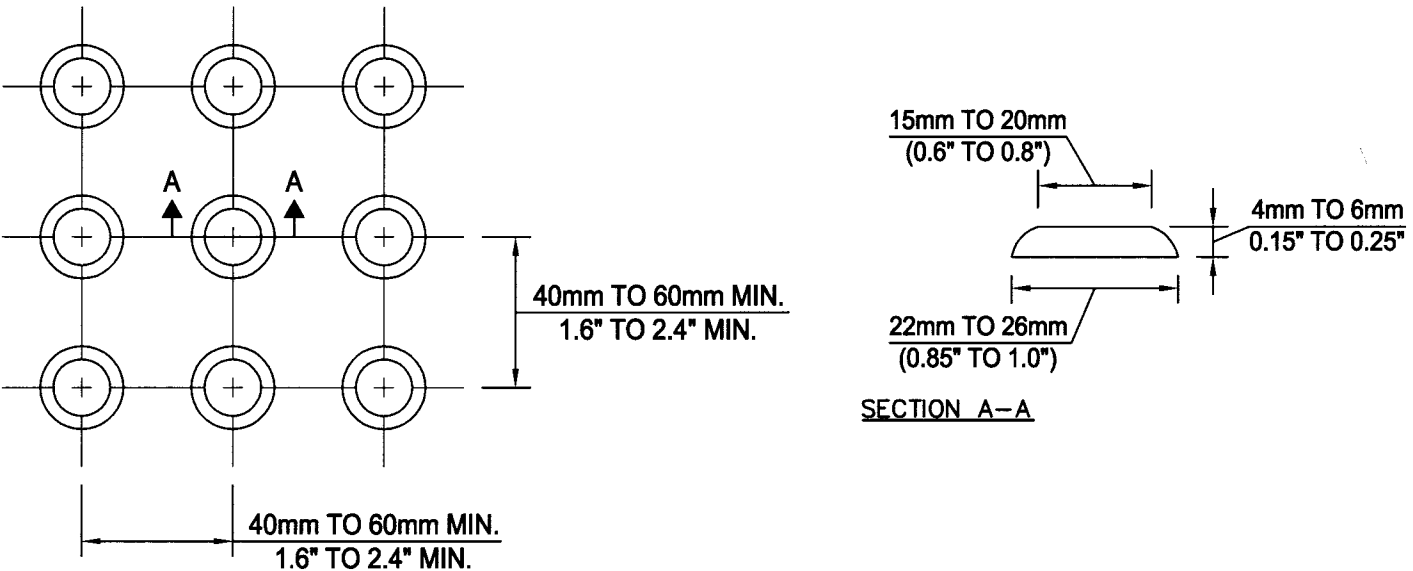


FIGURE 1: TYPICAL SIDEWALK WHEELCHAIR RAMP



TRUNCATED DOMES

NOTES:

1. TACTILE SURFACE INDICATOR COLOUR TO BE APPROVED BY THE CITY ENGINEER WITH HIGH TONAL CONTRAST TO THE ADJACENT RAMP SURFACE.
2. TACTILE SURFACE INDICATOR TO BE SLIP RESISTANT AND EXTEND THE FULL RAMP WIDTH.
3. TACTILE SURFACE INDICATOR TO BE CAST IN PLACE FOR NEW RAMP CONSTRUCTION IN ACCORDANCE WITH MANUFACTURER'S RECOMMENDATION.

CITY OF WINDSOR	
ENGINEERING DEPARTMENT	
TRUNCATED DOME TACTILE SURFACE INDICATORS	
DR'N BY: M. LADOUCEUR	CH'KD BY: S. SHYSHAK
CH'KD BY: P. UBENE	PASSED BY:
DATE: AUGUST, 2013	REVISION:
 CITY ENGINEER	Oct 4 / 2013 AS-549