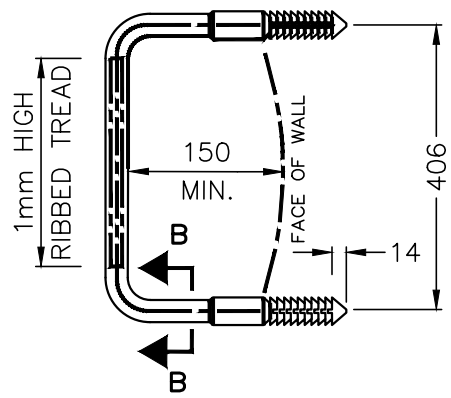
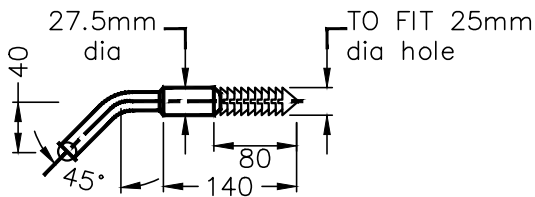


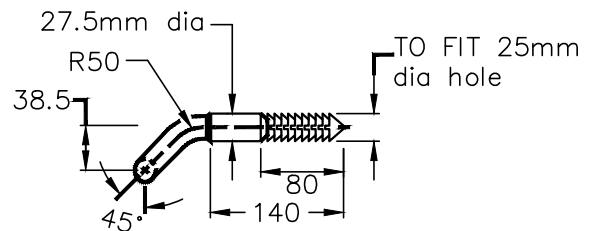
PLAN



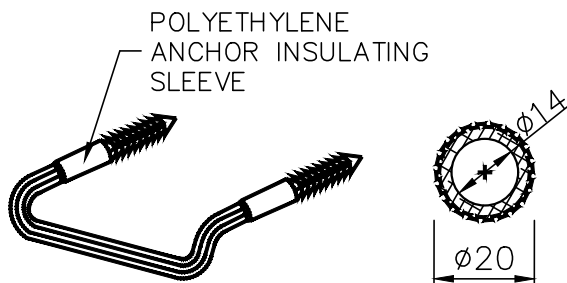
PLAN



SIDE VIEW

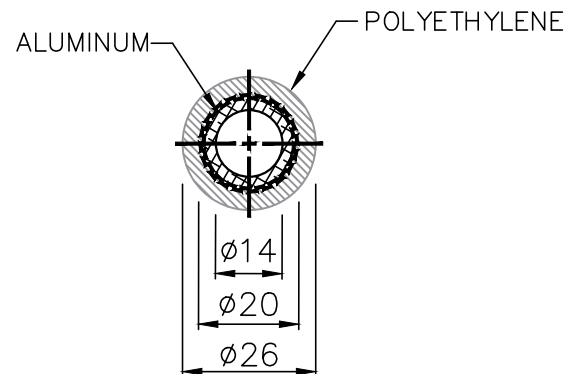


SIDE VIEW



AUXILIARY VIEW

SECTION A-A



SECTION B-B

**CIRCULAR ALUMINUM**

**CIRCULAR ALUMINUM WITH POLYETHYLENE ENCASEMENT**

NOTES:

1. THE COMPANY UNDERTAKING WELDED FABRICATION SHALL BE CERTIFIED ACCORDING TO CSA W47.1. ALL WELDING SHALL BE ACCORDING TO CSA W59.
2. ALL ALUMINUM COMPONENTS SHALL BE 6000 SERIES STRUCTURAL ALUMINUM.
3. ALL DIMENSIONS ARE IN MILLIMETERS UNLESS OTHERWISE SHOWN.

NOT TO SCALE

<b>CITY OF WINDSOR</b> ENGINEERING DEPARTMENT	
<b>DETAIL OF TYPICAL MANHOLE STEP</b>	
DR'N BY: ES, AZ	DATE: JUN, 1975
REV. DATE: MAR, 2024	CH'KD BY(ENG):PM, JH
CH'KD BY(GEO/OPS):PJU, AL	PASSED BY:FM
_____ CITY ENGINEER	<b>AS-305</b>