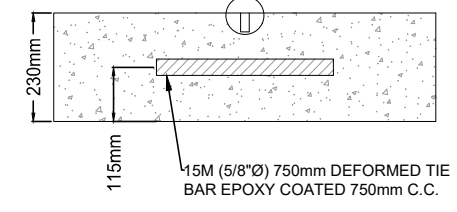
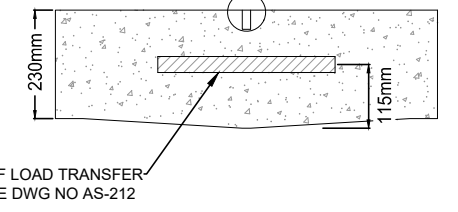
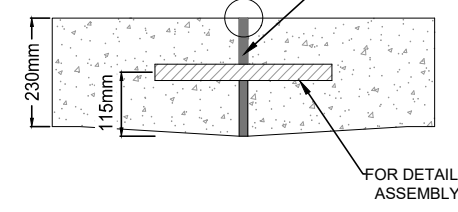
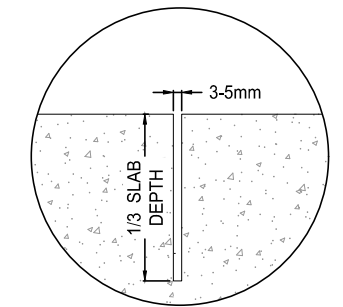
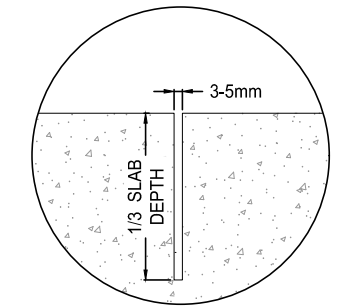
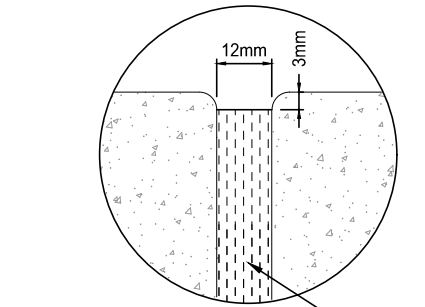
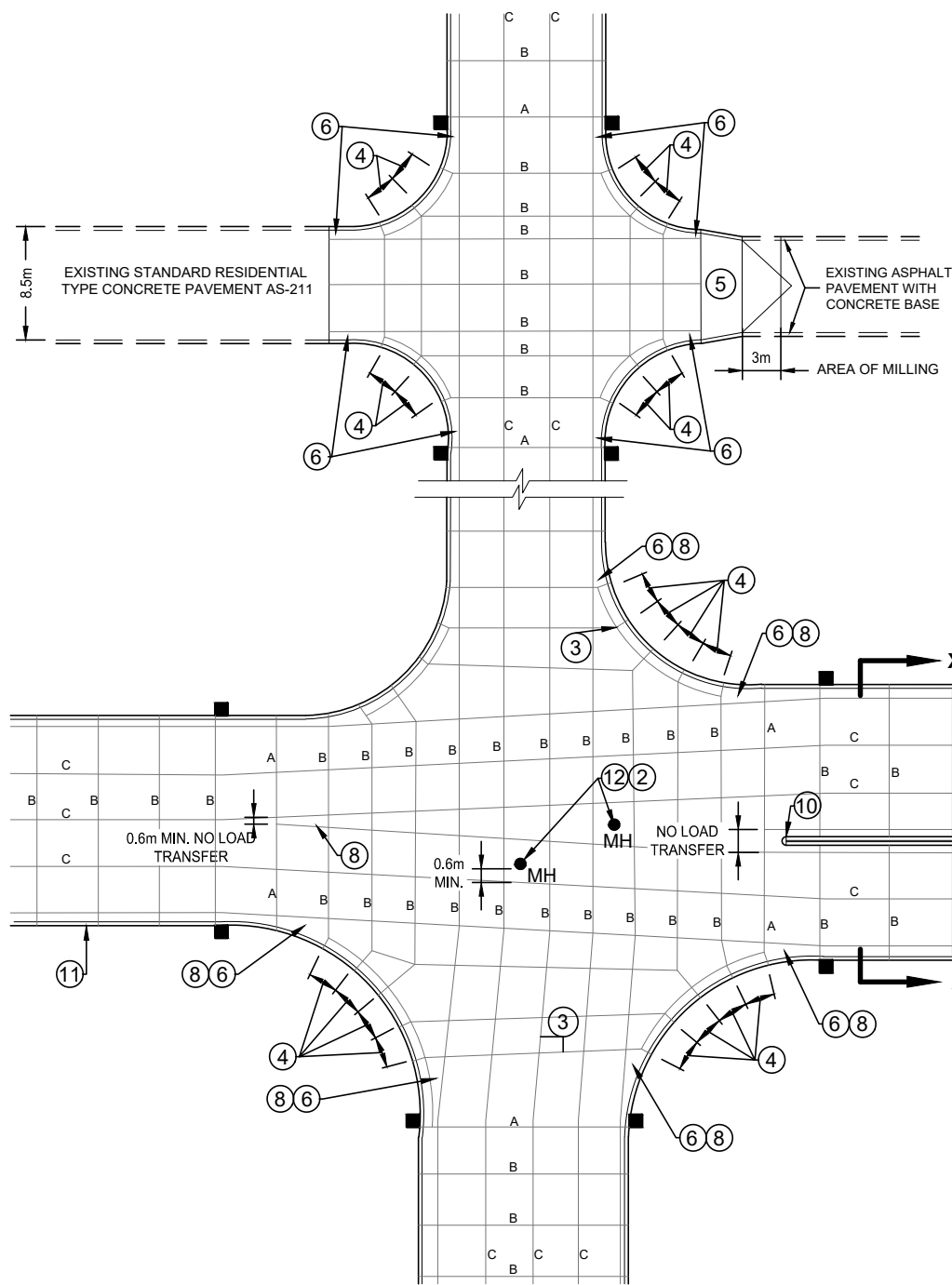


SECTION X - X



TYPE A
TRANSVERSE EXPANSION JOINT
WITH LOAD TRANSFER DEVICE

TYPE B
TRANSVERSE CONTRACTION JOINT
WITH LOAD TRANSFER DEVICE

TYPE C
LONGITUDINAL JOINT WITH
TIE BAR

GENERAL NOTES:

1. TYPE B TRANSVERSE CONTRACTION JOINTS WITH LOAD TRANSFER DEVICES SHALL HAVE RANDOM SPACING OF 4.5m, 4.25m, AND 3.65m.
2. PANEL JOINTS SHOULD BE ADJUSTED SO THAT ANY STRUCTURE (MH, WV, ETC) FALLS WITHIN THE PANEL WHEREVER POSSIBLE. THERE SHOULD BE A MINIMUM OF 0.6m FROM EDGE OF STRUCTURE TO ANY PANEL JOINT. REFER TO AS-213 FOR UTILITY ISOLATION.
3. ANGLES BETWEEN PAVEMENT JOINTS MUST NOT BE LESS THAN 45°.
4. JOINT SPACING FOR SEPARATE CURB AND GUTTER ON RADIUS SHALL NOT EXCEED 3m.
5. TRANSITION TO EXISTING HOT MIX AND COMPOSITE PAVEMENTS PER AS-554A. OLD BITUMINOUS SURFACED AREA TO BE MILLED AND RESURFACED WITH SURFACE COURSE ASPHALT AS DIRECTED.
6. INTEGRAL CURB AND PAVEMENT SHALL BE PROVIDED IN THESE AREAS SHOWN.
7. ALL WORK SHALL CONFORM TO CITY OF WINDSOR SPEC. S-7 & S-9.
8. CONCRETE PANEL SHALL NOT TAPER TO LESS THAN 0.6m WIDTH. WHERE CONCRETE NARROWS TO LESS THAN 0.6m WIDE IT SHALL BE CAST MONOLITHIC W/ ADJACENT PANEL.
9. ISOLATE ALL WATER AND GAS VALVES FROM SURROUNDING PAVEMENT WITH A 0.3m DIA. P.V.C. SLEEVE.
10. CONSTRUCT BULLNOSE AS PER AS-516. SQUARE GUTTER PAN TO FIT ADJACENT PAVEMENT PANEL.
11. REFER TO AS-208, AS-208A AND AS-216 FOR CURB AND GUTTER DETAILS, INCLUDING FOR CURBS PLACED INTEGRAL WITH CONCRETE PAVEMENT.
12. SELF LEVELING MAINTENANCE HOLE FRAME & COVER SHALL BE USED IN CONCRETE PAVEMENT, WHERE POSSIBLE. REFER TO AS-553.
13. REFER TO AS-301A & AS-301B FOR CURB INLET FRAME & COVER DETAIL.
14. TRANSVERSE JOINTS AT CATCH BASINS TO BE OFFSET TO EDGE OF CATCH BASIN STRUCTURE.

CITY OF WINDSOR
ENGINEERING DEPARTMENT

STANDARD CONCRETE DETAILS FOR
HEAVY DUTY PAVEMENTS

DR'N BY: LEB, BC, AC, AZ	DATE: JAN, 1972
REV. DATE: MAR, 2024	CH'KD BY (ENG): PM, JH
CH'KD BY (GEO/OPS): PJU, AL	PASSED BY: FM

NOT TO SCALE

CITY ENGINEER

AS-210